

KNIME Database Extension (Legacy) Guide

KNIME AG, Zurich, Switzerland
Version 4.6 (last updated on 2019-06-28)



Table of Contents

- Introduction..... 1
- Connecting to a database..... 2
- Vendor-specific JDBC drivers..... 3
- Working with databases..... 4

Introduction



This documentation describes the legacy database framework e.g. all database nodes that end with (legacy). For information on how to migrate from the legacy framework to the new framework see the [Migration](#) section in the new database [documentation](#).

The KNIME Database Extension provides a set of KNIME nodes that allow connecting to almost all JDBC-compliant databases. These nodes reside in the *Database* category in the Node Repository, where you can find a number of database access, manipulation and writing nodes.

The database nodes are part of every KNIME Analytics Platform installation. It is not necessary to install any additional KNIME Extensions.

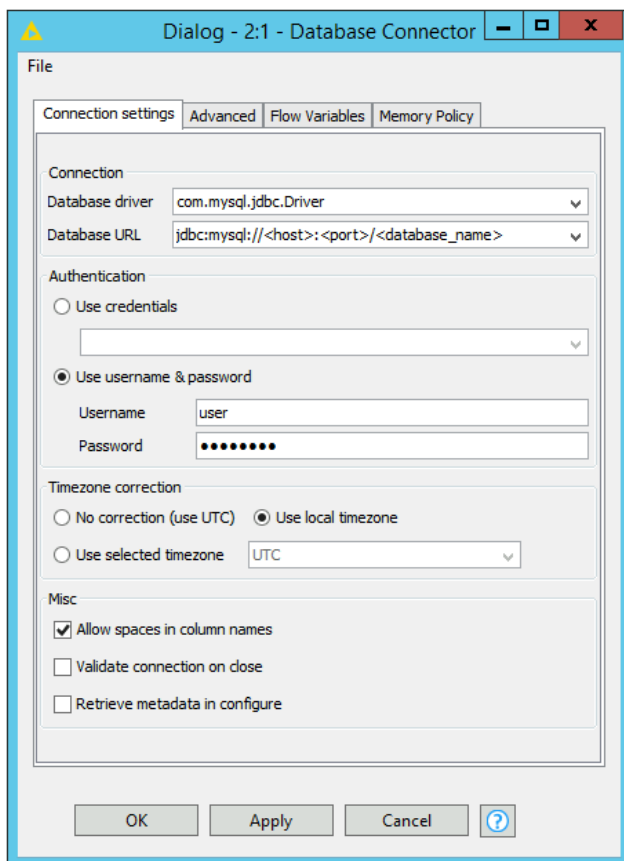
Connecting to a database

The *Database* → *Connector* subcategory in the Node Repository contains

- a set of database-specific connector nodes for commonly used databases such as MySQL,
- as well as the generic *Database Connector* node.



The database-specific connector nodes already contain the necessary JDBC drivers and provide a configuration dialog that is tailored to the specific database. It is recommended to use these nodes over the generic *Database Connector* node, if possible.



The generic *Database Connector* node can connect to arbitrary JDBC compliant databases. The most important node settings are described below

Database Driver: The dropdown box shows all available database drivers. You need to select an appropriate driver for your specific database. If there is no matching JDBC driver it first needs to be registered, see [Vendor-specific JDBC drivers](#)

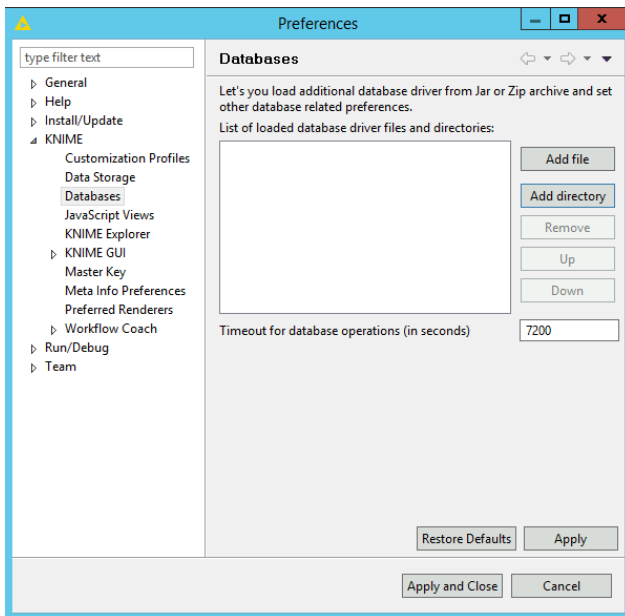
Database URL: A driver-specific JDBC URL is required. Please consult the vendor documentation for the JDBC driver you are using.

Authentication: Login credentials can either be provided via credentials flow variables, or directly in the configuration dialog.

For the remaining settings please consult the *Database Connector* node description.

Vendor-specific JDBC drivers

For some databases KNIME Analytics Platform does not contain a ready-to-use JDBC driver. In these cases, it is necessary to first register a vendor-specific JDBC 4.1 driver in KNIME Analytics Platform. Please consult your database vendor to obtain the JDBC driver.

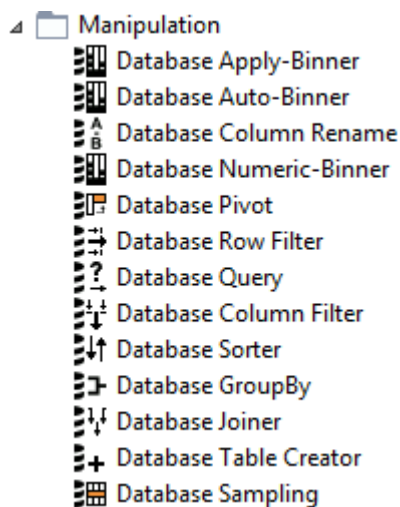


To register your vendor-specific JDBC driver, go to *File* → *Preferences* → *KNIME* → *Database Driver*.

Add file: Click here, if the driver is provided as a single `.jar` file.

Add directory: Click here, if the driver is provided as a folder that contains several `.jar` files. Some vendors offer a `.zip` file for download, which needs to be unpacked to a folder first.

Working with databases



Once you have successfully connected to your database, there is a set of nodes that provide **in-database** data manipulation, such as row filtering, joining etc.

Additionally, there are nodes to read, write or delete data from a database, or to run custom SQL statements, such as the **Database SQL Executor** node.

i

Please consult the example workflows, which are available in KNIME Analytics Platform in the KNIME Explorer View, when connecting to the **EXAMPLES** server. Under 01_Data_Access → 02_Databases you will find a variety of example workflows that demonstrate how to use the database nodes.

KNIME AG
Hardturmstrasse 66
8005 Zurich, Switzerland
www.knime.com
info@knime.com