

# KNIME Analytics Platform Installation Guide

KNIME AG, Zurich, Switzerland  
Version 5.2 (last updated on 2024-10-10)



# Table of Contents

Installing KNIME Analytics Platform .....	1
Configuration settings and knime.ini file .....	2
Allocating memory in knime.ini file .....	3
Installing Extensions and Integrations .....	4
Updating KNIME Analytics Platform and Extensions .....	7
Update Sites .....	8
Default Update Sites .....	8
Adding External Update Sites .....	9
Adding Local Update Sites .....	9
Working with the Nightly Builds .....	11
Release notes and changelogs (KNIME Analytics Platform 5.2) .....	12
KNIME Analytics Platform 5.2.0 .....	12
KNIME Analytics Platform 5.2.1 .....	25
KNIME Analytics Platform 5.2.2 .....	28
KNIME Analytics Platform 5.2.3 .....	31
KNIME Analytics Platform 5.2.4 .....	31
KNIME Analytics Platform 5.2.5 .....	32
KNIME Analytics Platform 5.2.6 .....	32

# Installing KNIME Analytics Platform

1. Go to the [download page](#) on the KNIME.com website to start installing KNIME Analytics Platform.
2. The download page shows three tabs which can be opened individually:
  - *Register for Help and Updates*: here you can optionally provide some personal information and sign up to our mailing list to receive the latest KNIME news
  - *Download KNIME*: this is where you can download the software
  - *Getting Started*: this tab gives you information and links about what you can do after you have installed KNIME Analytics Platform
3. Now open the *Download KNIME* tab and click the installation option that fits your operating system. KNIME Analytics Platform can be installed on Windows, Linux, or macOS.

Notes on the different options for Windows:

- The Windows installer extracts the compressed installation folder, adds an icon to your desktop, and suggests suitable memory settings.
- The self-extracting archive simply creates a folder containing the KNIME installation files. You don't need any software to manage archiving.
- The zip archive can be downloaded, saved, and extracted in your preferred location on a system to which you have full access rights.

Windows		
KNIME Analytics Platform for Windows (installer)	64 Bit	(441.03 MB)
<i>The installer adds an icon to the desktop and suggests suitable memory settings</i>	32 Bit	(437.42 MB)
KNIME Analytics Platform for Windows (self-extracting archive)	64 Bit	(444.58 MB)
<i>The self-extracting archive only creates a folder holding the KNIME installation</i>	32 Bit	(441.15 MB)
KNIME Analytics Platform for Windows (zip archive)	64 Bit	(529.54 MB)
	32 Bit	(525.59 MB)

Linux		
KNIME Analytics Platform for Linux	64 Bit	(554.2 MB)

Mac		
KNIME Analytics Platform for Mac OSX (10.11 and above)	64 Bit	(522.98 MB)

Figure 1. KNIME Analytics Platform available installers

4. Read and accept the privacy policy and terms and conditions. Then click *Download*.
5. Once downloaded, proceed with installing KNIME Analytics Platform:
  - *Windows*: Run the downloaded installer or self-extracting archive. If you have chosen to download the zip archive instead, unpack it to a location of your choice. Run `knime.exe` to start KNIME Analytics Platform.
  - *Linux*: Extract the downloaded tarball to a location of your choice. Run the `knime` executable to start KNIME Analytics Platform.
  - *Mac*: Double click the downloaded dmg file and wait for the verification to finish. Then move the KNIME icon to *Applications*. Double click the KNIME icon in the list of applications to launch KNIME Analytics Platform.

The following operating systems versions are supported:

- Windows
  - Windows 10, 11
  - Windows Server - 2016, 2019, 2022,
- Ubuntu 20.04 LTS and 22.04 LTS and derivatives
- RHEL/CentOS/Rocky Linux 8, 9
- macOS (12 and above - macOS x86\_64 Intel) and M1 (macOS arm64 - Apple silicon) (only the last two major versions are supported)
  - macOS 12: Monterey
  - macOS 13: Ventura



Also check the [KNIME Getting Started Guide](#) and the [KNIME Analytics Platform User Guide](#).

## Configuration settings and knime.ini file

When installing KNIME Analytics Platform, configuration settings are set to their defaults, and they can later be changed in the `knime.ini` file. The configuration settings, i.e. options used by the Java Virtual Machine when KNIME Analytics Platform is launched, range from memory settings to system properties required by some extensions.

You can find `knime.ini` in the installation folder of KNIME Analytics Platform.



**On MacOS:** To locate `knime.ini` on MacOS, open Finder and navigate to your installed Applications. Next, right click the KNIME application, select *Show Package Contents* in the menu, and navigate to Contents → Eclipse.

The `knime.ini` file can be edited with any plaintext editor, such as Notepad (Windows), TextEdit (MacOS) or gedit (Linux).

## Allocating memory in `knime.ini` file

The entry `-Xmx1024m` in the `knime.ini` file specifies how much memory KNIME Analytics Platform is allowed to use. The setting for this value will depend on how much memory is available in your machine. KNIME recommends setting it to approximately one half of your available memory, but you can modify the value based on your needs. For example, if your computer has 16 GB of memory, you might set the entry to `-Xmx8192m`.

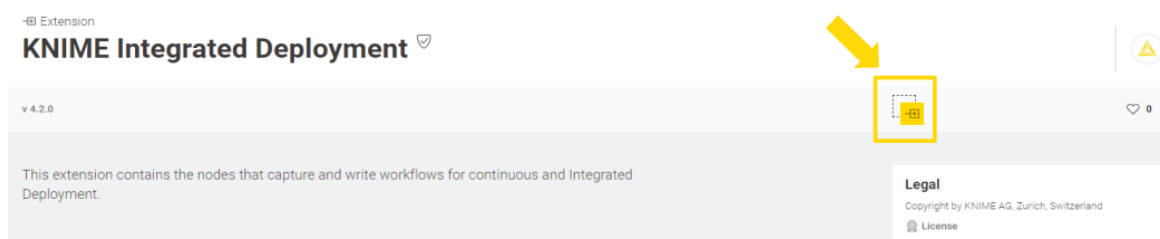
# Installing Extensions and Integrations

If you want to add capabilities to KNIME Analytics Platform, you can install extensions and integrations. The available extensions range from free open source extensions and integrations provided by KNIME to free extensions contributed by the community and commercial extensions including novel technology nodes provided by our partners.

The KNIME extensions and integrations developed and maintained by KNIME contain deep learning algorithms provided by Keras, high performance machine learning provided by H2O, big data processing provided by Apache Spark, and scripting provided by Python and R, just to mention a few.

Install extensions from:

- **KNIME Hub:**
  - Search for the Extension or Integration you want to install in the search bar
  - Click Extensions on the results page
  - Click the extension you want to install, and from the extension page and drag and drop the squared yellow icon, shown in **Figure 2**, to the KNIME Analytics Platform. A window will open asking if you want to search and install the extension or integration. Click Yes and follow the instructions.



*Figure 2. Install the KNIME Integrated Deployment Extension from KNIME Hub*

- Restart KNIME Analytics Platform.
- **KNIME Analytics Platform:**
  - Go to the *Menu* in the top right corner of the KNIME Analytics Platform.
  - Select *Install Extensions*. The dialog shown in **Figure 3** opens.

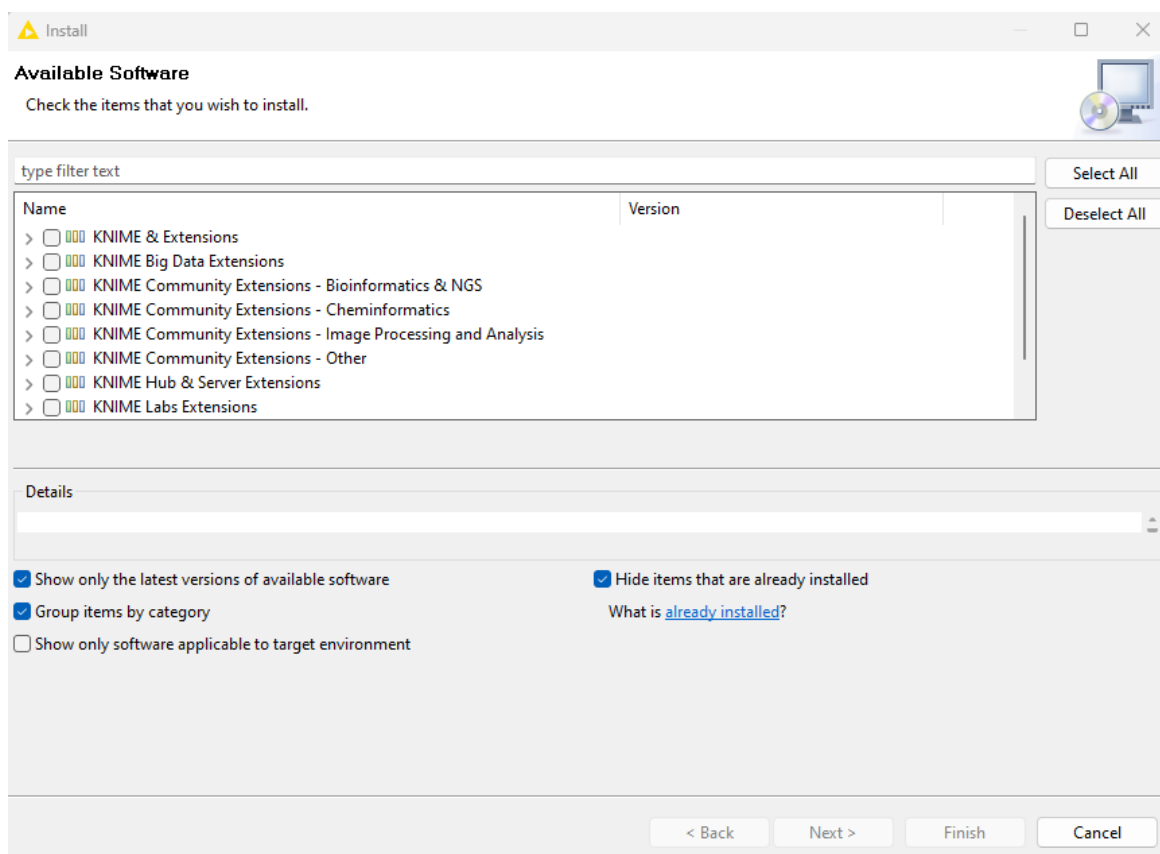


Figure 3. Installing Extensions and Integrations from KNIME Analytics Platform

- Select the extensions you want to install
- Click *Next* and follow the instructions
- Restart KNIME Analytics Platform.

The *Install Extensions* menu provides the extensions that are available via the **update sites** you have enabled.



If you encounter issues during the installation of Python based extensions, these might be related to challenges specific to this type of extensions. Find **here** information about how to troubleshoot these issues.

To uninstall an extension, go to the *Help* menu in the top right corner of the user interface and select the *About KNIME Analytics Platform*. In the window that opens click *Installation Details*. A dialog shown in **Figure 4** opens. Now, select the extension that you want to uninstall, and click *Uninstall...*

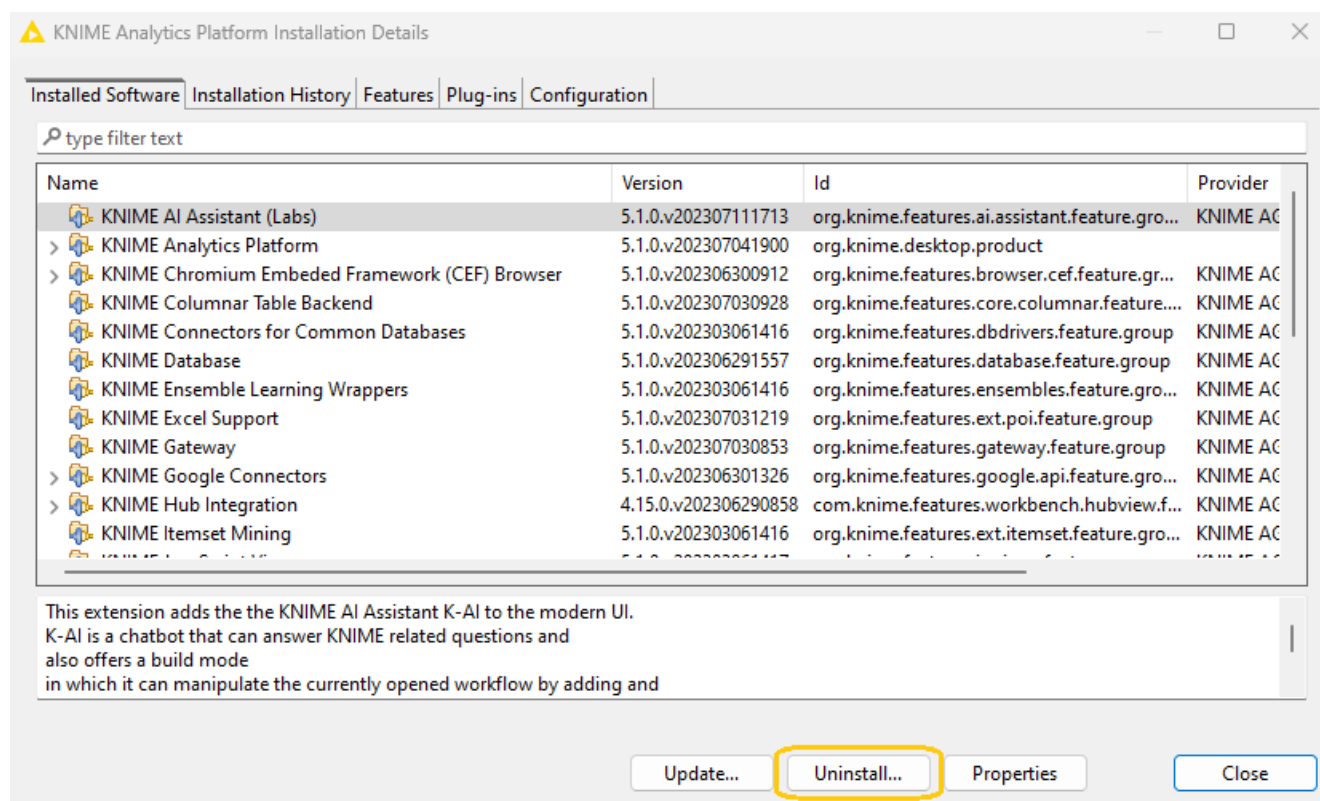


Figure 4. Uninstalling Extensions and Integrations



# Updating KNIME Analytics Platform and Extensions

It is good to make sure that you always use the latest version of KNIME Analytics Platform and its extensions.

To do so:

1. Go to the *Menu* in the top right corner of the KNIME Analytics Platform.
2. Select *Check for updates*. In the dialog that opens, select the available updates you want to install and then click *Next*.
3. Proceed by following the instructions. KNIME Analytics Platform has to be restarted in order to apply the updates.

# Update Sites

The Update Sites are where KNIME retrieves additional software in the form of extensions as well as updates. To see or edit the available update sites, click *Preferences* in the top right corner of the user interface. This opens the *Preferences* dialog. Select *Install/Update* → *Available Software Sites*.

## Default Update Sites

These four updates sites are provided by KNIME and are always available:

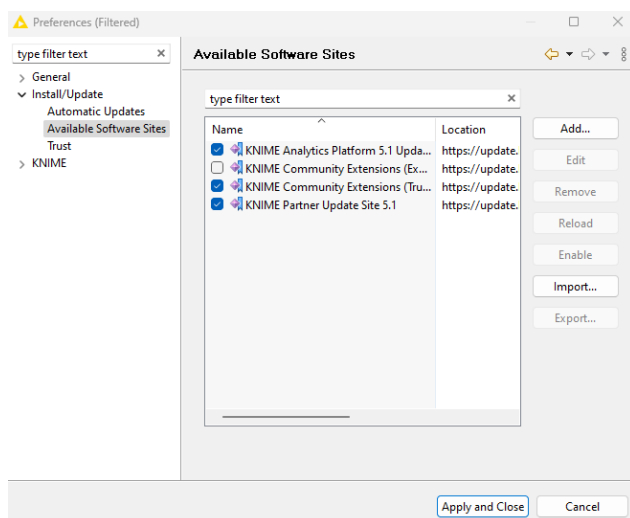


Figure 5. Available Update Sites

### KNIME Analytics Platform 5.2 Update Site:

Provides all extensions and integrations maintained by KNIME: R, Python, H2O Machine Learning, Apache Spark for big data, and many more. Contains KNIME Labs Extensions, which are extensions that are not yet part of the set of stable KNIME extensions because their functionality may not yet be finalized.

### Community Extensions (Experimental):

Provides additional extensions created by the KNIME community.

### KNIME Community Extensions (Trusted):

Provides trusted community extensions, i.e. extensions created by the KNIME community, which have been tested for backward compatibility and compliance with KNIME quality standards.

**KNIME Partner Update Site 5.2:** Provides extensions created by KNIME partners.

*KNIME Analytics Platform 5.2 Update Site and KNIME Community Extensions (Trusted) are*

enabled by default.

## Adding External Update Sites

To install extensions that are not part of the above update sites, click **Add** to manually add the relevant update site, inserting the Name and Location as shown in [Figure 6](#).

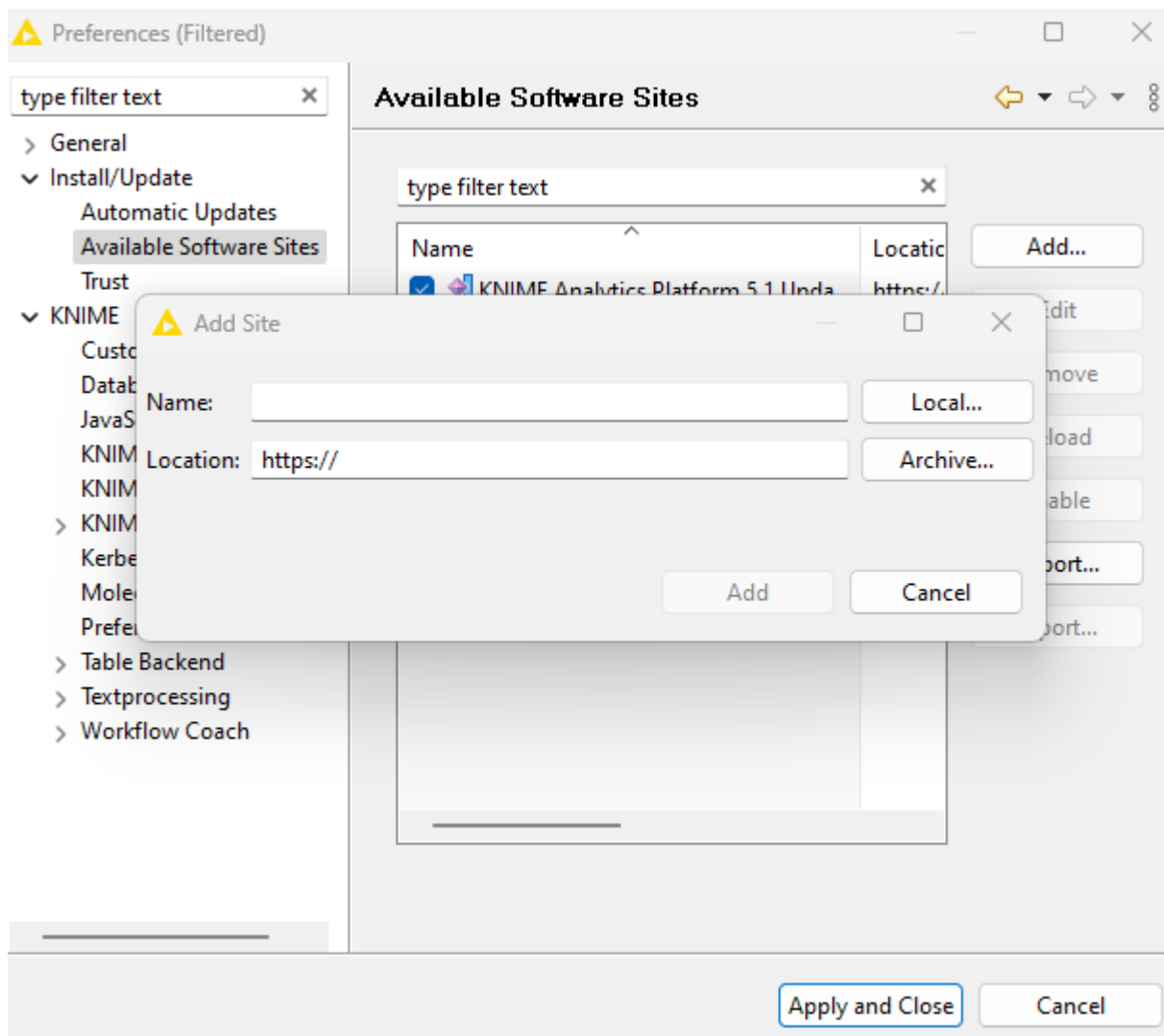


Figure 6. Add Update Sites

After adding a new update site you will see it listed in the *Available Software Sites*. You must now enable it by selecting it from the list.

## Adding Local Update Sites

If your working environment has limited internet access or you receive an error message “Proxy Authentication Required” when connecting to a remote update site (provided by a URL), you can install extensions from a local zip file.

1. Download KNIME update sites as zip files at the following links:
  - [KNIME Analytics Platform Update Site](#)
  - [KNIME Community Extensions](#)
  - [KNIME Partner Update Site 5.2](#)
2. Save the zip file containing the extensions to your local system
3. Click *Preferences* in the top right corner of the user interface. This opens the *Preferences* dialog. Select *Install/Update* → *Available Software Sites* and enter the path to the zip file by clicking *Add* → *Archive...* as shown in [Figure 7](#).

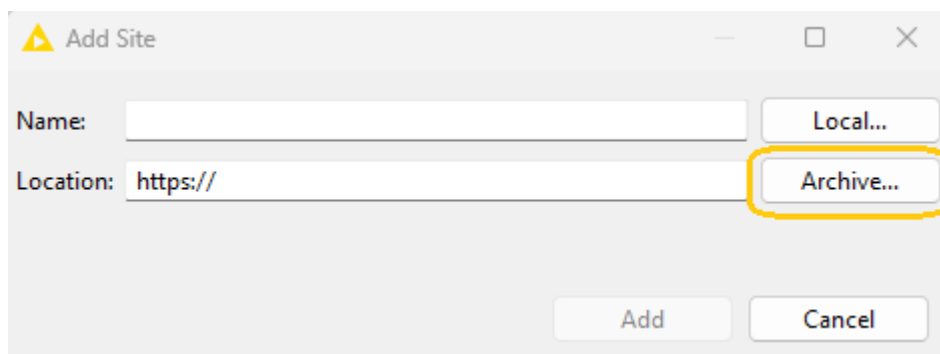


Figure 7. Adding Update Sites from Zip Archive



If the same extensions are provided by a URL, you will first have to disable the update site by disabling it in the list.

4. Now click *Apply and Close*



If the same extensions are also provided by a remote update site, you will first have to disable that update site by deselecting its entry in the *Available Software Sites* dialog and confirming via *Apply and Close*.

# Working with the Nightly Builds

Once a night, a new version of KNIME Analytics Platform is created directly from our development branch. The Nightly Build versions available [here](#) provide insight into what's coming up in the next regular release. However, for real work, always use a version of a standard KNIME release. Also read the following disclaimer before proceeding:



## **Really, really, *really* important disclaimer**

This is most definitely not production quality code. These nightly builds are what we use internally to validate and test recent developments, so they are not tested as thoroughly as standard KNIME releases. Furthermore new nodes or functionality may change substantially (or disappear entirely) from one build to the next. It's even possible that workflows you edit or create with nightly builds stop being readable by future (or past) versions...

These nightlies are a great way to get a sneak peek at what may be coming in the next version of KNIME and provide feedback and suggestions. They are not a particularly safe way to do real work.

# Release notes and changelogs (KNIME Analytics Platform 5.2)

Release notes and detailed changelog for v5.2.x releases

## KNIME Analytics Platform 5.2.0

Release date: December 06, 2023

### Release notes

- As of KNIME AP 5.1 the “Modern UI” is the new default user interface to view and edit workflows. With 5.2 all relevant functionality has been ported but few remaining features will be added in future releases. This includes:
  - A tree view for the node repository
  - Keyboard navigation for the most prominent features to enhance accessibility via hotkeys within the Modern UI
  - More perspectives in addition to the Starter Perspective
  - General improvements to the space explorer
- “KNIME Reporting” is moved out of KNIME Labs (the BIRT reporting remains available via KNIME Classic UI)
  - Unlike KNIME Analytics Platform 5.1 the Reporting extension now requires the use of a special Report Template Creator node, defining page layout etc. Report workflows created in 5.1 will issue a warning during loading, and the user needs to insert the start node separately
- Node and Extension Deprecation
  - (Outdated) Weka extensions marked legacy and removed from update site category
  - KNIME Jython Scripting (Legacy) removed from update site category (previously in KNIME Labs but no longer actively developed)
  - KNIME Rule Viewer (Labs) marked legacy and removed from update site category
  - PDF/HTML Writer Extension marked legacy (use full reporting extension instead)
  - KNIME Column Storage (based on Apache Parquet) marked legacy; superseded by columnar table backend (Arrow backed)

## Changelog (KNIME Analytics Platform 5.2.0)

### New nodes

- AP-21641: Report Page Break (enforced page break between two report fragments)
- AP-21536: Microsoft Authenticator (with web-based UI)
- AP-21527: Box Authenticator (with new credentials widget, deprecates existing Box Authenticator)
- AP-21514: OpenAI DALL-E node
- AP-21302: Email Mover (Labs)
- AP-21301: Email Connector (Labs)
- AP-20945: String Cleaner
- AP-20938: Add Generic ECharts View node with modern script editor and AI integration
- AP-20905: GPT4All Chat Model Connector
- AP-20826: Report Loop End
- AP-20791: String Format Manager
- AP-20788: HF TGI Chat Model Connector
- AP-20748: Azure OpenAI nodes
- AP-20725: Google Authenticator (with WebUI)
- AP-20388: Secret Retriever
- AP-19576: Email Reader (Labs)
- UIEXT-1208: Image View node

### Enhancements

- AP-20216: Install bundled Python environment into bundling/envs instead of the plugin to reduce long path problems (kudos to @yupliu and @DerMaxdorfer for reporting [1](#) and [2](#))
- AP-20829: (Classic Perspective) Truncate overly long character strings when rendering - prevents freezes with large documents (kudos to @mwiegand for reporting [1](#))
- AP-20960: Support proxy settings in Python based nodes (kudos to @Erich\_Gstrein and @DrorMirzayof for reporting [1](#) and [2](#))
- AP-21469: Google Analytics Connector node to add selection for parent account (kudos to @denisfi for reporting [1](#))

- NXT-162: Save workflow as (kudos to @rfeigel for reporting 1)
- NXT-2050: Rename edit node label context menu option (kudos to @HaveF for reporting 1)
- UIEXT-389: Non-auto axis limits across all plots (kudos to @Ammar\_Muhammad, @iCFO and @rsherhod for reporting 1, 2 and 3)
- AP-21605: Support org.apache.cxf.transport.http.forceURLConnection system property to avoid CXF thread exhaustion
- AP-21575: Add GPU support for GPT4All nodes
- AP-21557: KNIME Rule Viewer (Labs) marked legacy and removed from update site category
- AP-21556: KNIME Jython Scripting (Legacy) removed from update site
- AP-21553: Modern Script Editor with AI integration for Python Script and Python View node
- AP-21522: Allow to set API base in OpenAI Authenticator
- AP-21467: K-AI: Display Markdown
- AP-21466: Google Analytics Connector to provide port object output for modern viewer
- AP-21429: HF Hub Chat Model Connector
- AP-21415: Add CID to mail attachments in Send Email node
- AP-21402: Allow to install K-AI from sidebar
- AP-21400: Reporting extension moved out of KNIME Labs
- AP-21394: Revise K-AI UI/UX
- AP-21383: Improve positioning of added nodes
- AP-21336: Column alias in db metadata (e.g. for SAP HANA calculated views)
- AP-21310: Value Lookup: Replace Lookup Column (similar to Cell Replacer (deprecated))
- AP-21280: Reporting: Use CEF for PDF generation by default, make Bundled Chromium an optional dependency
- AP-21265: REST Client Nodes (e.g. WebPage Retriever) to be more robust when web pages illegally claim that content is gzipp'ed (but really isn't)
- AP-21235: Check configuration of deployment when version is changed
- AP-21212: Allow to configure flow variables from hover icon in Python node dialog
- AP-21087: KNIME Hub Connectivity: Split into stable (installed by default) and labs



- AP-21061: Allow user to configure page breaks in Reporting nodes
- AP-21050: String Replacer (Dictionary) with new default with regard to iterative application of replacement rules
- AP-21045: Treat temporary service failures more gracefully in Explorer
- AP-21041: Improve deletion of multiple jobs in KNIME Explorer
- AP-21026: Show progress indicator when fetching jobs from KNIME Hub
- AP-21019: Support pagination in AP Explorer
- AP-20983: Add option to clear input field before filling it in Text Sender
- AP-20979: Teradata support in DB Connector node
- AP-20965: Increase StringHistory limit in Date&Time to String and String to Date&Time nodes
- AP-20946: Robustify server address input validation in `AdditionalInformationPanel`s
- AP-20917: Expose more parameters in GPT4All Connectors
- AP-20908: Support credential port object in Python nodes
- AP-20906: Support multi-line string input fields in Python nodes
- AP-20893: Snowflake driver updated to version 3.14.1
- AP-20870: Snowflake Connector with support for new Credentials port
- AP-20868: Support Azure OpenAI for ai-service in BHub
- AP-20861: Microsoft SQL Server Connector with support for new Credentials port
- AP-20850: Prompt K-AI to answer in the question language
- AP-20849: Give K-AI a memory
- AP-20824: Missing value handling in vector store creators
- AP-20823: Support metadata in Chroma vector stores
- AP-20821: Scripting Editor KNIME communication and state management
- AP-20809: Reference the content that is used to create response
- AP-20789: Wait Node: Progress Bar to show remaining time
- AP-20784: Call Workflow nodes: Allow for KNIME hub version selection
- AP-20780: Optional Report Configuration Input Port at Components (when reporting is enabled)
- AP-20761: Allow resizing and collapsing of panels in script editor
- AP-20734: KNIME Column Storage (based on Apache Parquet) marked legacy; superseded by columnar table backend (Arrow backed)

- AP-20733: PDF/HTML Writer Extension marked legacy (use full reporting extension instead)
- AP-20731: Weka 3.6 (and before) marked legacy; superseded by newer version - extension is uncategorized
- AP-20714: Excel Reader supporting reading large files (300+ MB)
- AP-20653: Java Node API: Add Supplier API to NodeLogger
- AP-20605: SAP HANA support in DB Connector node
- AP-20551: Sorter implementation optimized - fewer comparisons in merge phase (+improved progress)
- AP-20550: GroupBy & Pivot optimized: Speedup due to new sorting routing and fewer data scans
- AP-20484: Workflow Summary Extractor node: Output empty instead of redacted string for empty passwords
- AP-20436: AP-wide authenticated proxy support for REST requests
- AP-20404: Add Date & time parameter for Python node settings
- AP-19999: Improve CASE Switch Start node handling of invalid flow variable input during configure
- AP-19913: Credentials Configuration: Support Credentials Flow Variables from outside Component
- AP-19518: Support pretty names of SAP HANA calculated views
- AP-16729: Support writing of password protected Excel files (Excel Writer & Excel Cell Updater)
- AP-12956: Type mapping for chemistry types (Sdf, Smiles, Mol, and PDB) - enables direct reading and writing to databases
- BD-1209: (Big Data Extensions): Include Databricks JDBC driver version 2.6.34 in Databricks feature
- NXT-2171: Delete underlying links inside workflow annotations without removing the link text
- NXT-2169: Open Layout Editor from outside the component
- NXT-2153: Support y-position and height on metanode port bars
- NXT-2142: Display progress for Node Extension Cache construction on startup
- NXT-2133: Reload space via a button
- NXT-2129: URL in annotation box is not easily editable or deleted

- NXT-2124: Duplicate space item
- NXT-2115: Move metanode bars
- NXT-2101: Opening, editing, saving shared components on a Hub
- NXT-2096: Display extension name and vendor in the node repository
- NXT-2089: Provide a submenu entry in Menu to open the KNIME log location in the file explorer of the operating system
- NXT-2045: Endpoint ui and ux improvements
- NXT-2022: Automatically check workflows with linked components for updates after open a workflow or component
- NXT-2008: Edit and delete schedules via the keypad menu
- NXT-2001: Restructure Home / Info Panel into submenu items
- NXT-1964: Draw connections in front of nodes
- NXT-1944: Add and remove endpoints
- NXT-1938: Open local component project in a separate application tab
- NXT-1937: Link / unlink components
- NXT-1926: Collapse bottom panel
- NXT-1925: Switching workspace
- NXT-1923: Detach node monitor port view into a separate application window
- NXT-1918: Save as workflow or delete jobs in KNIME Server modal
- NXT-1916: Display jobs and schedules of KNIME Server workflows
- NXT-1915: Open swagger API / Open in WebPortal for KNIME Server space items
- NXT-1914: Execute and schedule KNIME Server workflow
- NXT-1913: Set KNIME Server permissions
- NXT-1912: Basic KNIME Server support for Modern UI
- NXT-1903: Add Open legacy port view button in node monitor
- NXT-1820: Group spaces by owner
- NXT-1735: Selection, annotation and pan mode for the workflow editor
- NXT-1730: Show complete progress message in tooltip while node is executing
- NXT-1643: Move space items from one hub space to another hub space on the same hub
- NXT-1508: Enhance behaviour of opening workflows from an external space provider

- NXT-1457: Display component metadata when selected
- NXT-1211: Enable selection functionality for detached table node monitor
- NXT-1083: Add and connect to selected node via a double click in the node repo
- NXT-1012: List based node repo view
- NXT-944: Edit component metadata
- NXT-191: Rendering and moving bend points for connections
- UIEXT-1358: Enable 2-factor authentication for credentials widget
- UIEXT-1329: Enable custom row heights in table view
- UIEXT-1310: Add execute shortcuts to new dialogs
- UIEXT-1216: Add ui to control flow variables
- UIEXT-979: Add possibility to show only selected rows in table view
- UIEXT-917: Fix scroll bar to right side of view port
- UIEXT-899: Enable color handling in existing column based views
- UIEXT-611: Bar Chart change default for positioning/coloring bars
- UIEXT-310: Remove padding and margins in data apps

## Bug Fixes

- AP-19973: Update sites don't work with Proxy requiring credentials (kudos to @Nuke\_Attokurov for reporting [1](#))
- AP-20588: Sorter node does not handle missing flow variable for alphaNumStringComp (kudos to @richards99 for reporting [1](#))
- AP-20998: Component input / output nodes are classified as missing node, when it is configured with a port object from an extension that is not installed (kudos to @takbb for reporting [1](#))
- AP-21003: Vector store tool is not used correctly by agent (kudos to @lsandinop for reporting [1](#))
- AP-21043: Google Analytics Connector node does not list all available properties (kudos to @denisfi for reporting [1](#))
- AP-21398: Row Aggregator miscalculates weighted average (wrong formula) (kudos to @Bytecrawler for reporting [1](#))
- NXT-1927: Execute button is above the table (kudos to @sw1336 for reporting [1](#))
- NXT-2026: Some 'Locales' prevent workflows from being displayed (kudos to @k1000 for reporting [1](#) and [2](#))

- AP-21552: Classic UI: Component update status indicators not updated on error
- AP-21539: Metanode to Component conversion fails under special circumstances
- AP-21065: Adding file system input port removes outgoing connections to metanodes
- AP-21059: Decision Tree View (JavaScript): encoding issues on Windows
- AP-21046: AP: can't delete multiple jobs in one go
- AP-20799: Shared Component in not-shared Component not updated
- AP-20727: Expanding a component can fail (when connections just go through)
- AP-21634: Node description of Call Workflow (Table Based) node wrongly lists report generation
- AP-21619: Add pyarrow-hotfix to python-legacy environments
- AP-21587: Properly handle UNC path in Report PDF/HTML Writer node (on Windows)
- AP-21584: Access denied error when uninstalling python extension on windows
- AP-21583: Statistics calculation stores references to DataValues
- AP-21563: Vector store creators fail if empty document is provided
- AP-21560: Update pyarrow in knime-python-base=5.2 to 14.0.1 to prevent CVE-2023-47248
- AP-21495: K-AI error is not reported in frontend
- AP-21494: Preference page does not support customization profiles on KNIME Hub
- AP-21472: Issue with prompts when loading KNIME
- AP-21446: Send to Tableau Server node opens up large amounts of ports and does not close them on Windows Server
- AP-21417: BIRT Report not generated when using Call Workflow nodes with hub callee
- AP-21378: Table View (JavaScript) cannot display Local Date Time type data on Japanese desktop
- AP-21375: GPT4All .gguf models do not work
- AP-21367: Table Cropper fails after Python nodes
- AP-21365: Space Connector should be disabled in remote workflow editor when KNIME Hub Authenticator is attached
- AP-21352: Jobs disappear in explorer when workflow is deleted and workflow with same name is uploaded
- AP-21322: Overwriting different types of Hub space items fail without any warning/error messages in MUI

- AP-21260: Report Writer PDF/HTML with CEF fails when used with relative-to workflow KNIME URL
- AP-21252: xlink:href attributes in HTML coming from WebpageRetriever cause errors in XML parser
- AP-21249: Table Reader cannot read large JSON values in Columnar backend
- AP-21246: Report Writer PDF/HTML fails on Hub when used with relative-to workflow KNIME URL
- AP-21244: REST Client nodes do not properly load proxy settings w/ auth
- AP-21223: Default off-heap memory size strategy often exceeds available RAM when combined with Xmx
- AP-21089: Application menu bar reads NewApplication instead of KNIME on macOS Sonoma
- AP-21079: Error when opening OpenAI Connector dialogs with invalid credentials
- AP-21069: K-AI: Build mode fails on smalltalk
- AP-21067: AI Extension nodes pick first matching column during autoconfigure
- AP-21038: Snowflake DB Loader fails in KNIME Executor if local file access is disabled
- AP-20962: Drag and drop extension: Clicking OK in the already installed dialog duplicates the Hub page
- AP-20930: K-AI doesn't work with Python extensions
- AP-20904: GPT4ALL Llama 2 outputs garbage
- AP-20841: Python Extension: Adding column filter breaks backwards compatibility
- AP-20721: Sharing Component from within open Component Template throws NullPointerException
- AP-20451: Node > Update Links Task Does Not Find All Remote Component Updates
- AP-20131: Node identifier in node stats and modern node repo can have clashes
- AP-19876: Partitioning node fails on empty input table
- NXT-2090: Paste doesn't reliably paste the clipboard content from the previous copy
- NXT-2072: Too many threads comm-pool-thread-1 getting generated (but not discarded) when generating images in a loop
- NXT-2070: After moving and releasing a node or nodes user interface stays in the moved state and is not resonsible and usable anymore
- NXT-2036: D&D data files from Hub space to workflows in Modern UI does not add true path

- NXT-1995: Double click to open configuration dialog does not work inside linked metanodes or components for unselected nodes
- NXT-1954: Nodes move by just clicking on them
- UIEXT-1478: Value switch is not keyboard navigatable
- UIEXT-1446: Running multiple Report PDF Writer nodes at the same time breaks the report
- UIEXT-1327: Remove warnings in reporting for table view
- UIEXT-1322: Prevent editing of dialogs in linked/locked components
- UIEXT-1320: Node descriptions are incomplete: Nested settings are missing

## Nodes changing in KNIME Analytics Platform 5.2.0

### **New Nodes:**

- Secret Retriever
- Align to Inertial Principal Axes
- Apply Transforms (RDKit) (Experimental)
- Ertl Scaffold Keys
- Force Field Conformer Energies
- Fragments to MMPs
- Fragments to MMPs (deprecated)
- MMP Calculate Maximum Cuts (RDKit)
- MMP Calculate Maximum Cuts (deprecated)
- MMP Fragmentation Type Loop Start
- MMP Molecule Filter (RDKit)
- MMP Molecule Filter (deprecated)
- MMP Molecule Fragment (3rd Gen) (deprecated)
- MMP Molecule Fragment (RDKit)
- MMP Molecule Fragment (deprecated)
- MMP Molecule Multi-cut Fragment (3rd Gen) (deprecated)
- MMP Molecule Multi-cut Fragment (RDKit)
- MMP Molecule Splitter (RDKit)

- MMP Molecule Splitter (deprecated)
- MMP Show Cuttable Bonds (RDKit)
- MMP Show Matching Bonds (RDKit)
- Matched Molecular Pairs (RDKit) (deprecated)
- PMI Calculation (deprecated)
- Principal Moment of Intertia (PMI)-Derived PropertiesKNIME HTML/PDF Writer
- Reference Fragments to MMPs
- Marvin JS Widget
- SyGMa Metabolites
- Automated Matched Pairs
- Generic ECharts View
- Image View
- Text View
- String Cleaner
- String Format Manager
- Report Page Break
- Report Template Creator
- Report Loop End
- SARIMA Forecaster (Apply)
- SARIMAX Forecaster (Apply)
- GPT4All Chat Model Connector
- GPT4All Embeddings Connector
- HF Hub Chat Model Connector
- HF TGI Chat Model Connector
- OpenAI DALL-E View

**Nodes replaced, old nodes deprecated:**

- Box Authenticator
- Microsoft Authenticator
- Google Authenticator

**Nodes declared legacy:**



- Table to HTML (Legacy)
- Table to PDF (Legacy)
- JPython Script 1:1 (Legacy)
- JPython Script 2:1 (Legacy)
- JPython Function (Legacy)
- Rule Viewer (local) (Legacy)
- Text Output Widget (legacy)
- Image Output Widget (legacy)
- KNIME Weka Data Mining Integration (3.6) - *all nodes in the extension*

**Nodes renamed:**

- Image to Report → Image to Report (BIRT)
- Data to Report → Data to Report (BIRT)
- Report Concatenate (Table) → Report Concatenate (Table) (Labs)
- Report PDF Writer (Labs) → Report PDF Writer
- Report HTML Writer (Labs) → Report HTML Writer
- Report Concatenate (Labs) → Report Concatenate
- Crosstab (legacy) → Crosstab
- Statistics → Statistics View
- HF TextGen LLM Connector → HF TGI LLM Connector

## Community Extensions

**Partner Extensions**

Extension	Contributor	Changes
KNIME Connector for SAP(KCS) Nodes	De Villiers Walton Ltd.	Available soon
exorbyte extension	exorbyte GmbH	Available soon
Spotfire File Nodes	TIBCO Spotfire	Available soon

**Trusted Community / Open Source Extensions**

Extension	Status
Generic Workflow Nodes for KNIME	Available
KNIME Groovy Scripting extension	Available
KNIME HCS Tools	Available
KNIME Python Scripting extension	Available
KNIME R Scripting extension	Available
Lhasa	Available
OpenMS	Available
RDKit Nodes Feature	Available
Slack Integration	Available
Continental Nodes for KNIME	Available
Genentech	Available
Geospatial Analytics Extension	Available
Neo4J	Available
Vernalis KNIME Nodes	Available
KNIME Image Processing	Available
KNIME-CDK	Available
KNIME AI Extension	Available
Web Interaction	Available
KNIME Nodes for Scikit-Learn (sklearn) Algorithms	Available

### Experimental Open Source Extensions / Experimental Community Extensions

Extension	Changes
AF Utility Nodes	Available

Extension	Changes
CIR KNIME Integration	<b>Available</b>
KNIME Matlab Scripting extension	<b>Available</b>
Process Mining Extension	<b>Available</b>
Apprise Nodes	<b>Available</b>
Erlwood KNIME Open Source	<b>Available</b>
KNIME Shapefile Support	<b>Available</b>
Indigo KNIME integration	<b>Available</b> - Not working on MacOS because of a <b>bug in Indigo</b>
AI.Associates Signal Processing	<b>Available</b>
Enalos Nodes for KNIME	<b>Available</b>
PM4KNIME	<b>Available</b>
Redfield BERT Nodes	<b>Available</b>
Redfield NLP Nodes	<b>Available</b>
3D-e-Chem KNIME nodes	<b>Available</b>
FSK-Lab	<b>Available</b>
Word2Vec	<b>Available</b>
PIA	Available soon
KNIME Spatial Processing Nodes	Available soon
MMI Data Analytics Nodes	Not available anymore
OrientDB	Not available anymore since 5.1

## KNIME Analytics Platform 5.2.1

Release date: February 07, 2024

## Changelog (KNIME Analytics Platform 5.2.1)

### Enhancements

- NXT-1906: Basic read-only mode for job viewer
- UIEXT-1518: Generic JavaScript view does not work when sanitisation is activated
- AP-21926: Option to disable authentication check in (Azure) OpenAI Authenticator
- AP-21896: Improve Secret Retriever error message when no KNIME Hub connection is available
- AP-21790: Mountpoint option in KNIME Hub Authenticator
- AP-21786: Use URLConnection instead of HttpClient for REST requests (improves stability for concurrent requests)
- AP-21748: Add Legacy/Deprecated labels to the extension names
- AP-21741: Show global customization profiles in AP preferences as well
- AP-21684: KNIME Hub Authenticator with better error and URL validation
- AP-21579: Add configuration option for 'receiveTimeout' in Salesforce Query nodes
- AP-21550: KNIME Hub Authenticator with advanced option to expose URL of current KNIME Hub as flow variable
- AP-20946: Robustify server address input validation in `AdditionalInformationPanel`s
- NXT-2266: Display full space item name in title

### Bug Fixes

- AP-21958: Using local update archive is not possible (kudos to @arushib30 for reporting [1](#))
- AP-21851: K-AI doesn't use proxy for websocket connections
- AP-21784: Vector Store to Tool node dialog fails to load
- AP-21745: Resetting Workflow on KNIME Server not possible
- AP-21738: Missing Plotly extension leads to workflow/component error on load with deleted node
- AP-21732: Google Authenticator (API Key) (deprecated) fails to load the API key from knime:// URLs which point to a remote repository
- UIEXT-1493: JavaScript Views do not work with bundled chromium anymore (kudos to @USCHUKN1ME for reporting [1](#))

- AP-21891: OpenAI Connectors fail to list models for non OpenAI API base URLs
- AP-21785: KNIME-wide proxy exclude list dominates REST client nodes
- AP-21777: Email Reader might run indefinitely if a message gets deleted during processing
- AP-21759: HTTP connections to URLs ignore proxy exclude list
- AP-21736: GPT4All Embeddings Connector node fails to read local models when offline
- AP-21735: Missing node message duplicated for each missing node
- AP-21725: Agent Prompter fails if tool description or tool name is in an invalid format for OpenAI Functions Agent
- AP-21718: Include Conda Packages of Bundled Python Environment by default
- AP-21707: Space Connector should only warn during configure phase if mountpoint is unconnected
- AP-21702: Report port deserialization may not respect original fragment order (kudos to @njconnolly for reporting [1](#))
- AP-21681: Node repository is empty after installing certain extensions (kudos to @ralf42 and @danielessner for reporting [1](#) and [2](#))
- AP-21658: K-AI doesn't update disclaimer when switching hub
- AP-21650: Duplicate Row Filter: "Column name of row status" field should disappear when removing duplicate rows
- AP-21622: Race condition when shutting down draining executor
- AP-21617: Excessive thread creation when loading many jobs
- AP-21540: Email Reader node flags read emails as unread if the "Mark read emails as read" option is disabled
- AP-21471: `DataType.getCommonSuperType()` returns type of `pm4knime`
- AP-21237: macOS Sonoma: Splash screen is displayed upside down (kudos to @ssq for reporting [1](#))
- AP-20516: "Model Reader" (and other readers) may leave temp files behind after use (only for large, complex models such as XGBoost)
- AP-20299: Duration in Table View (classic & modern) sorted like strings
- AP-18133: Excel Reader does not correctly load sheet selection mode (kudos to @Geo for reporting [1](#))
- NXT-2316: Workflow SVG is empty if workflow is saved from within component
- NXT-2289: Replacing nodes deletes all endpoints and undo won't recreate them

- NXT-2260: Changes in annotations are lost if a users switch the tab and styles are lost if you switch from one to another workflow annotation
- NXT-2240: Description in space explorer card overlaps the space card boundaries (kudos to @mlauber71 for reporting [1](#))
- NXT-2211: "Save As" workflow not working properly (kudos to @sw1336 for reporting [1](#))
- NXT-2123: Clicking/tapping really fast on a node can cause an issue (kudos to @takbb for reporting [1](#))
- NXT-1939: If Statistics view/computation is aborted, data in Table is no longer shown (kudos to @DiaAzul for reporting [1](#))
- UIEXT-1517: Table Editor (JavaScript) reverts to first option on dropdown opening (kudos to @CHKnime for reporting [1](#))

#### Known issue

Network proxy authentication information is cached even after changing username and password in the KNIME preferences. Restart the application in order to apply the new authentication (limitation in Java, see [Bug Entry](#)).

## KNIME Analytics Platform 5.2.2

Release date: March 13, 2024

### Changelog (KNIME Analytics Platform 5.2.2)

#### Enhancements

- AP-22107: Microsoft Authenticator: Allow to set User-Agent
- AP-22016: Add Local prefix to GPT4All LLM and Chat Model Connectors
- AP-21886: Enable HTML sanitization for older JavaScript views by default on executors
- AP-20615: Increase Custom/KNIME URL default timeout to prevent timeout during redirects
- NXT-2448: Add "workflow configuration" to workflow description
- NXT-2441: Update to Equo Chromium 106.0.25
- NXT-953: Change target of links e.g. in node description, workflow and component

meta information to be target="\_blank"

## Bug Fixes

- AP-21872: Reset All button doesn't function properly for metanodes (kudos to @Christopher41 for reporting [1](#))
- AP-21960: Excel Reader: data shifts to wrong columns if re-evaluate formulas option is not checked (kudos to @Appear3044 and @cinthy for reporting [1](#) and [2](#))
- AP-21995: (Image) Download from Generic ECharts View not possible (kudos to @JeanDavid for reporting [1](#))
- AP-22019: Can't set execution retries when initially creating a schedule
- AP-22015: Credentials Configuration and Widget nodes no longer allow overriding credentials with String variables
- AP-22004: DB Loader fails for Snowflake if the KNIME workspace is located on a shared drive on Windows
- AP-21997: Integrated deployment: workflow manager instance doesn't retain custom workflow name
- AP-21982: Python views do not synchronize with selection 5.1 and 5.2
- AP-21967: Authenticated proxy credentials are saved and reused KNIME-wide till restart after the first use
- AP-22094: Possible workflow load problem in "Microsoft Authenticator" when port is connected to component output
- AP-22052: Redundant proxy authentication popups on AP startup
- AP-22022: K-AI Unknown host error
- AP-21992: org.knime.core.table.virtual.graph.cap.Branches: there is no predecessor branch
- AP-21938: Opening WFs using uninstalled Python Extensions will completely lose the nodes instead of showing "Missing Node"
- AP-21727: Error messages of failed Python Extension Installations are unusable
- AP-21225: CVE-2023-5562 - JS code injection vulnerability in old JS views (e.g. Table View)
- AP-21060: Zip Archive Connector fails to open .knwf files
- AP-19239: Multi-file table reader nodes should fail when file schema has changed
- NXT-2419: Hidden metanodes aren't hidden in the modern UI

- UIEXT-1620: File Upload Widget finishes too early

## HTML sanitization of JavaScript View nodes and Widget nodes

With the release of 5.2.2 KNIME executors will have HTML sanitization of old JavaScript View nodes and Widget nodes turned on by default. This should ensure that no malicious HTML can be output. It is still possible to achieve the old behaviour by turning the sanitization off globally both for **KNIME Hub** execution contexts (see instructions [here](#)) and for **KNIME Server** (see instructions [here](#)). For KNIME Server sanitization rules can also be further customized, see [KNIME WebPortal Administration Guide](#).

Interesting nodes to know about:

- Text Output Widget (legacy): If this is set to output HTML content, it will be sanitized. You can use the new Text View or Image View which have their own sanitization rules internally, but allow certain styling tags or exempt the Text Output Widget from sanitization
- Image Output Widget (legacy): This will not work with sanitization turned on. Sanitization will strip all SVG tags, leaving in most cases only axis labels and names to be displayed as plain text. Also the workaround here is to use the new Image View or add the node to the exemptions.
- Generic JavaScript View: This node is now always exempted from global sanitization and have an additional flag (`-Djs.core.sanitize.sanitizeGenericJSView`) which is set to true by default for new executors. With this flag enabled all input data to the node (input table and flow variables) will be sanitized.  
This leads to the following behaviour: if a workflow builder set up the node so that just values are displayed by tables and flow variables it might only loose some formatting or simply work as before. However if a script was set up in a way that for example HTML was constructed using the contents of flow variables or JavaScript libraries were injected using flow variables this will now most likely fail. If this is still needed the system property has to be set to false explicitly. Additionally there is a new checkbox in the node to enable/disable this input sanitization. However this will be overwritten if the system property is set to true.

All other (view) nodes might behave differently if a workflow builder tried to customize styling by use of HTML (e.g. in table cells or in tooltips used inside of charts). The effects here should be that either only the styling does not work or some content won't be visible at all, depending on the context.



## KNIME Analytics Platform 5.2.3

Release date: March 27, 2024

### Changelog (KNIME Analytics Platform 5.2.3)

#### Enhancements

- NXT-2509: Update to Equo Chromium 106.0.26

#### Bug Fixes

- NXT-2490: Modern UI doesn't load in presence of outdated community extension (kudos to @Ardilla and @arief\_rama for reporting [1](#) and [2](#))
- AP-22103: Python Views don't open after unsaved re-execute
- NXT-2480: Dialog crashes AP when being closed and a 'window.alert' window was open
- AP-22229: K-AI doesn't work with proxy authentication
- NXT-2491: Yellow-Bar Component Projects do not Save Changes Back to Hub/Server in MUI Hybrid Mode

## KNIME Analytics Platform 5.2.4

Release date: May 23, 2024

### Changelog (KNIME Analytics Platform 5.2.4)

#### Bug Fixes

- AP-21776: Joiner might complain about duplicate columns although there are none (but col names matching '(#1)') (kudos to @weiclav for reporting [1](#))
- AP-22339: REST nodes fail when using a credentials flow variable for Digest authentication (kudos to @tescnovonesis for reporting [1](#))
- UIEXT-1619: The preview of twin list column selection in WebUI dialogs includes wrong columns (kudos to @mwiegand for reporting [1](#))
- AP-22412: Python View plot preview does not work (kudos to @JHVines for reporting [1](#))

- NXT-2607: MUI load error in case of open temp workflow in a different drive than workspace's drive (kudos to @mwiegand for reporting [1](#))
- AP-22321: Updating nested linked components may fail in executor
- AP-22277: Proxy credentials not supplied for Workflow Jobs with HTTPS Connections
- AP-22368: Generic ECharts View runs forever in reporting in certain report configurations
- AP-22503: Google BigQuery Connector throws exception with no input connection
- UIEXT-1845: File Chooser Widget does not show files and empty folders
- UIEXT-1795: Modifying displayed statistics settings in Statistics View dialog doesn't reset/refresh the preview
- UIEXT-1782: Line plot lines are ignored if not in view port
- UIEXT-1774: Overwriting the whole content of a Text Output Widget with a flow variable bypasses HTML sanitization
- UIEXT-1751: Wrong data type shown in table view

## KNIME Analytics Platform 5.2.5

Release date: June 4, 2024

### Changelog (KNIME Analytics Platform 5.2.5)

#### Bug Fixes

- NXT-2477: Timeout error when generating Report via (Batch) Executor on Windows (kudos to @Camderman106, @cf\_123 for reporting [1](#), [2](#))
- UIEXT-1900: View nodes do not work in metanodes if directly connected to inner metanode output (kudos to @BPU for reporting [1](#))
- BD-1292: (Big Data Extensions): Fix user impersonation of Big Data Connector nodes and Create Spark Context (Livy) when running on KNIME Business Hub
- NXT-2640: Job Viewer: Fix message event origin check

## KNIME Analytics Platform 5.2.6

Release date: October 16, 2024

## Changelog (KNIME Analytics Platform 5.2.6)

### Enhancements

- AP-15669: "Send to Tableau Server" node to support credentials variable (currently requires user+pass in dialog) (kudos to @KristianRohde for reporting [1](#))
- AP-23213: Write executor container logs to configurable file
- AP-23160: Respect direct memory setting in Watchdog
- AP-23158: Report KNIME process usage in executor logs
- AP-22969: Extend executor start script to forward executor crash information to stdout
- AP-22951: Allow Conda processes to be terminated by Watchdog
- AP-22950: Allow Python processes to be killed by watchdog
- AP-22948: Add watchdog to AP that kills external processes' that use too much memory
- AP-22937: Determine executor heap size based on container requests
- AP-22508: Only poll for job updates if team has execution enabled on Hub
- NXT-2748: Update to Equo Chromium 106.0.28

### Bug Fixes

- AP-21672: Broken Community Extension might break PortType#availablePortTypes (should try-catch ExceptionInInitializationError) (kudos to @mwiegand @joel\_lewinson @ajackson for reporting [1](#) [2](#) [3](#))
- AP-21727: Improve error messages of failed Python extension installations (kudos to @StevenLauretti for reporting [1](#))
- AP-22836: Excel Writer dialog shows warning when adding a space to a sheet name but still executes fine (kudos to @Christopher41 for reporting [1](#))
- AP-22906: High CPU load when connecting to Hub without execution contexts (kudos to @mwiegand for reporting [1](#))
- AP-23134: Switch to modern UI freezes frontend due to uncaught class cast exception (kudos to @swebb for reporting [1](#))
- AP-23194: Importing WF from AP <= 5.0 to AP 5.1, 5.2 or 5.3 with a string replacer causes parameters to not appear (kudos to @tymask3891 for reporting [1](#))
- AP-23267: Directories on SMB network share erroneously detected as non-writable (kudos to @cridiaz for reporting [1](#))

- AP-22737: Excel Reader throws `IllegalStateException` when parsing is cancelled too quickly (kudos to @locodust6 for reporting 1)
- AP-23008: Installed AP on Windows doesn't start without installing a JRE if Windows UTF-8 (locale) was enabled before AP installation (kudos to @ssimara for reporting 1)
- UIEXT-1896: Column renamer sometimes does not rename (kudos to @Tigerfox for reporting 1)
- AP-22924: Excel Reader dialog can enter inconsistent state when no password is provided for protected files
- AP-22909: Freeze when trying to open a workflow in Remote Workflow Editor
- UIEXT-2087: Clicking on download link of File Download Widget makes the view black (node or composite) if the file is a PDF
- AP-23361: Conda Env Propagation node deletes ALL envs if env name flow variable is blank
- AP-23059: SMB Connector fails with `NullPointerException` if password in credentials flow variable is null
- AP-22940: Python doesn't trust same CA's as the rest of the AP
- AP-22923: Chroma Vector Store Reader fails with illegal collection name error
- AP-22811: Global proxy settings in executor will break executor functionality
- AP-22752: Topic Extractor (Parallel LDA) node does not show iteration statistics in certain locales
- AP-22707: Text Embedder fails on table without rows
- AP-22690: Call Workflow Service Node fails calling Service Deployments with "Use current Hub" Hub Auth Connection
- AP-22617: Hugging Face nodes don't work for older client version
- AP-22594: Python `DateTimeParameter` default value has wrong type if `show_time=False`
- AP-22558: Fix problem when escaping column placeholder in parameterized and looping db nodes
- AP-22551: Workflow credential "knime.system.default" is treated by mistake as flow variable and fails with `IllegalFlowVariableNameException`
- AP-22498: Conda Env Propagation node fails with latest conda version because `--force` flag got removed
- AP-20664: `ReadDataCache` blocks on close if writing batches failed
- AP-19687: Table Manipulator: Unable To Include Columns On Changing Table Spec

- AP-19656: String Manipulation logic breaks if KNIME open too long (temp files deleted by OS)
- AP-10222: Attempted to append to closed appender while logging
- UIEXT-2118: Memory Leak in Table View (ModernUI) keeps reference to workflow instance
- UIEXT-2054: Image generation in executor (Hub/Server) may crash application under heavy load (used in data viz nodes w/ image port enabled)
- UIEXT-1966: Two combo boxes on the same interface result in selection issues

KNIME AG  
Talacker 50  
8001 Zurich, Switzerland  
[www.knime.com](http://www.knime.com)  
[info@knime.com](mailto:info@knime.com)