

KNIME Tableau Integration User Guide

KNIME AG, Zurich, Switzerland
Version 5.3 (last updated on 2021-08-04)



Table of Contents

Introduction.....	1
Installation.....	2
Installing the Tableau Extensions	2
Tableau Online Setup	3
Tableau Usage Example	5
Example workflow	5
Tableau Writer node	6
Publishing .hyper files.....	6
Send to Tableau Server node.....	8
Creating a Visualization in Tableau Online.....	10
Legacy Extensions	12
Installing the Legacy Tableau Extensions	12
Installation Setup.....	13
Troubleshooting	15
"Hyper Server did not call back on the callback port"	15

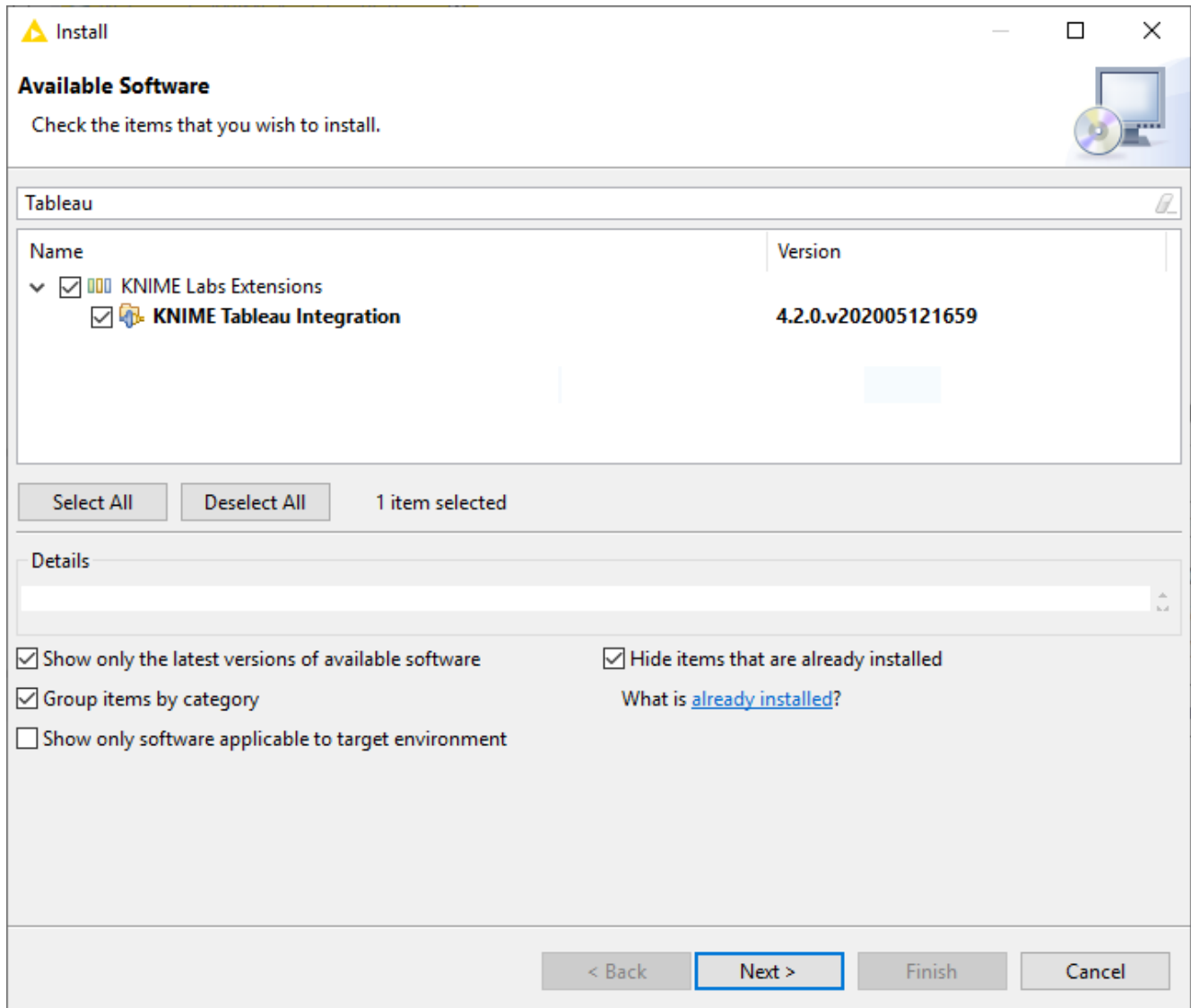
Introduction

This guide explains how to connect KNIME Analytics Platform with Tableau®. There are a few methods you can use to do this, and the text below describes these methods in further detail, while walking through an example KNIME workflow.

Installation

Installing the Tableau Extensions

Navigate to *File* → *Install KNIME Extensions* and type "Tableau" in the search box that appears. When you do, you will see something like the screen below.



Install the extension **KNIME Tableau Integration**.



The Tableau integration uses the "**Tableau Hyper API**" which uses the `.hyper` format. If you want to use the `.tde` format for a Tableau Server 10.4 or earlier you can install and setup the legacy extension as described in the **Legacy Extensions** section. Additional information on the differences between the TDE and `.hyper` formats, along with the changes implemented in Tableau 10.5, can be found on the **Tableau website**.

Once you have installed the extension(s), restart KNIME Analytics Platform and you should see the Tableau nodes in the node repository under *KNIME Labs*. You can now drag and drop the Tableau nodes into your workflow and use them to export data.

Tableau Online Setup

For the purpose of this guide, we will assume that you want to publish data to Tableau Online. However, most of what is discussed here also applies if you host your own Tableau server. If you do not already have a Tableau Online account, you can create a [trial account](#). For the steps that follow, you will need a few pieces of information:

- The URL of your Tableau server.



In your KNIME workflows, you must use the redirected specific URL – for example `https://us-west-2b.online.tableau.com` – and **not** the general URL `https://online.tableau.com`.

Also, take particular care to use the secure `https`-protocol.

- Your username
- Your password
- Your Tableau site ID. For *Tableau Online*, this can be observed within the URL itself. Given the URL `https://us-west-2b.online.tableau.com/#/site/ExampleSite/projects`, the site ID is `ExampleSite`.

You will also need to have a Tableau Project already in place on the server. By default, *Tableau Online* creates a default project for you, but it is a good idea to create one and give it an appropriate name. You can do this in *Tableau Online* by navigating to the projects section and clicking on the *New Projects* button. The project we will create for this guide is called "Adult Income".

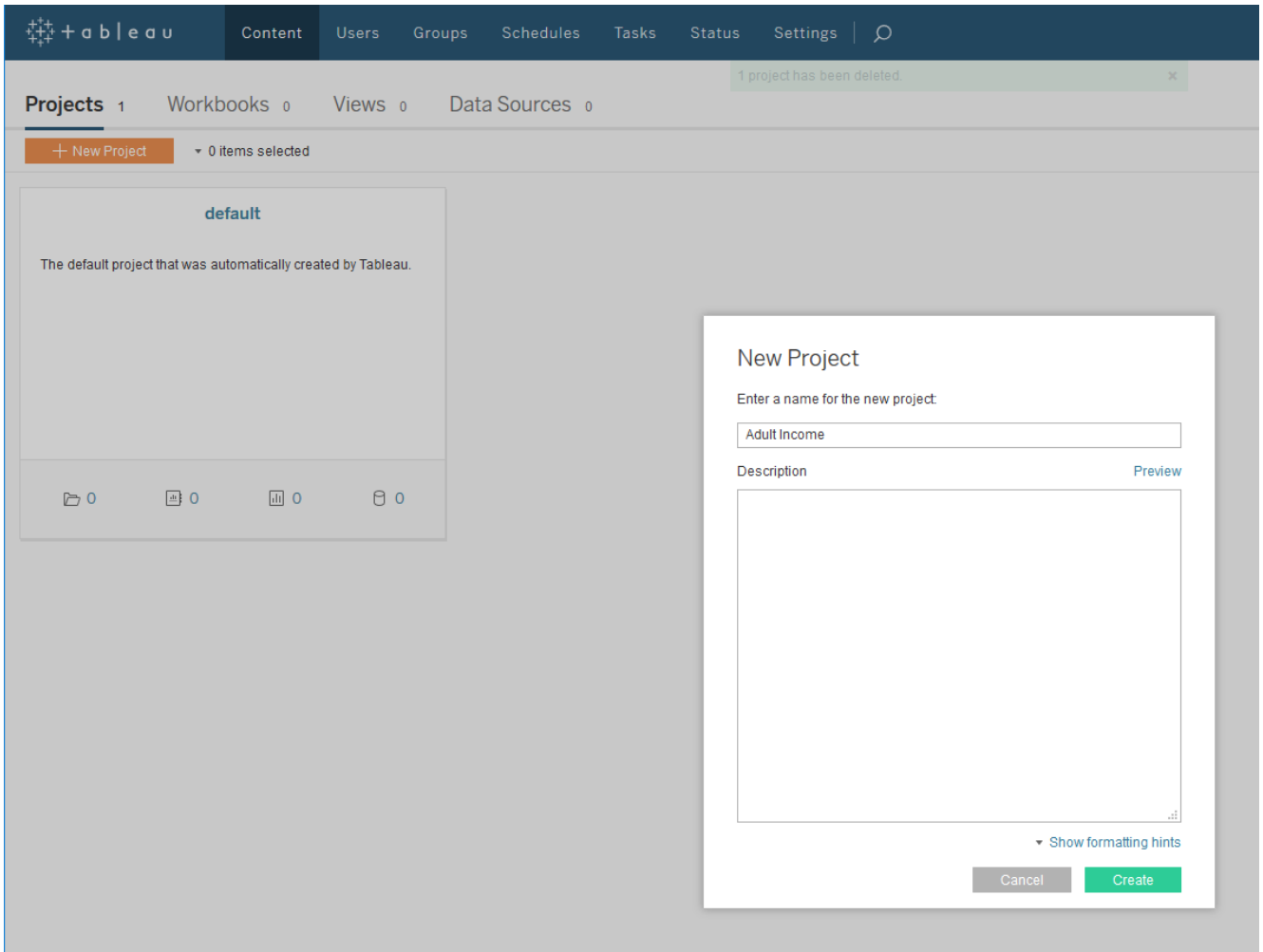


Tableau Usage Example

Example workflow

To get started, download the *Tableau Integration Example* workflow from the EXAMPLES server. The workflow and associated dataset is available at [EXAMPLES/05_Reporting/02_Tableau/01_Tableau_Integration_Example](#). Go ahead and execute the five nodes listed in the "Usual Modeling Steps" section. This is a workflow that reads in a file containing demographic and income information for a sample of adults working in the United States, and uses the decision tree node to predict and score income classification for the sample. Of more interest to us, the workflow also exports both the raw data and results of the decision tree model using Tableau nodes in a few different ways, which we will discuss in more detail below.



The nodes in the workflow can be easily swapped with the legacy nodes for compatibility with older versions of Tableau.

Tableau Integration Example

This workflow builds a simple decision tree model, and passes results to Tableau nodes for both writing to local files, and exporting to a Tableau server.

For more information see the workflow metadata. Find it here: [View -> Description](#)

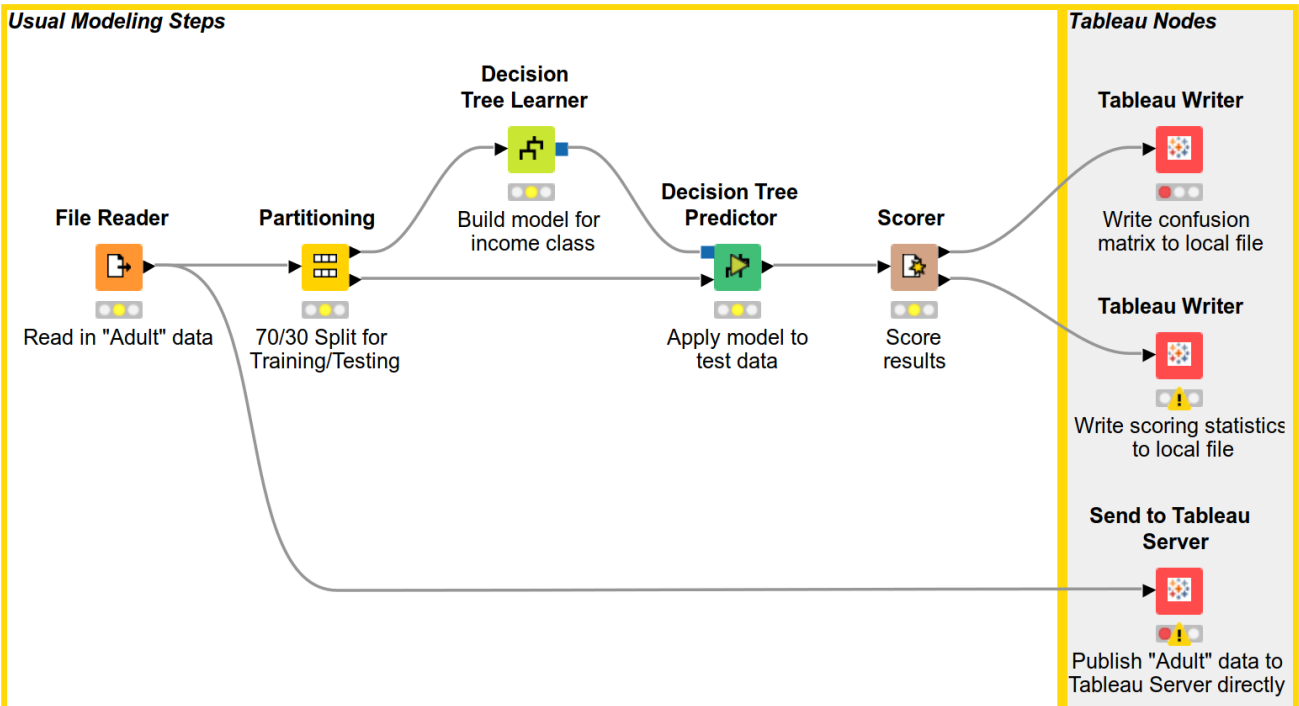
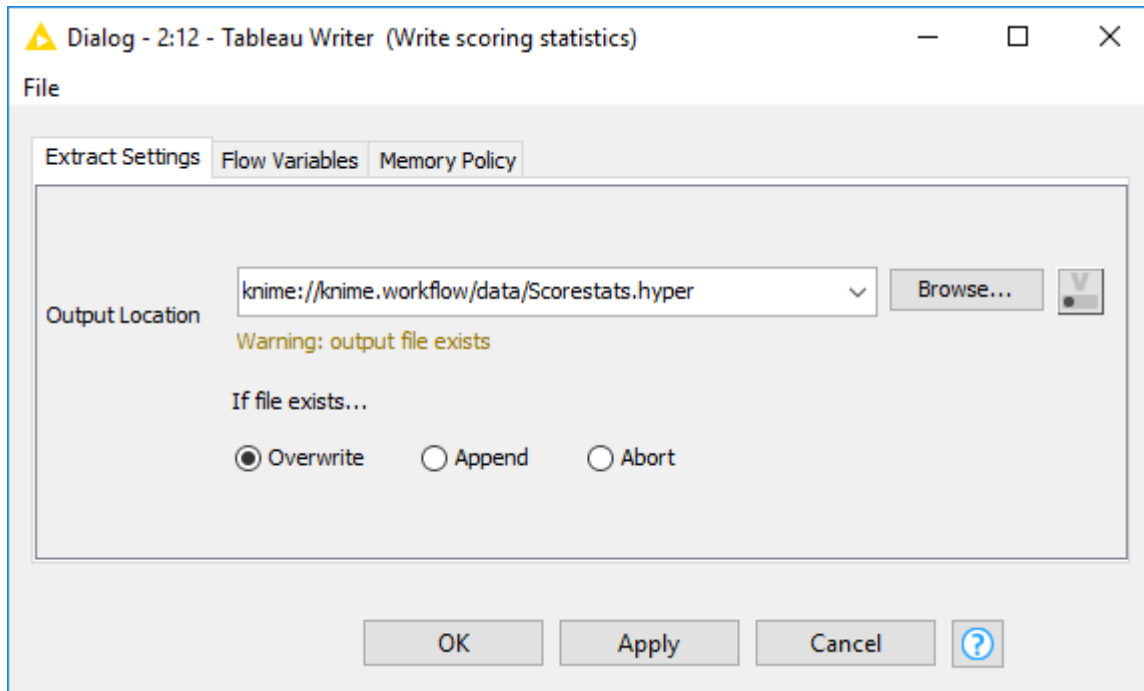


Tableau Writer node

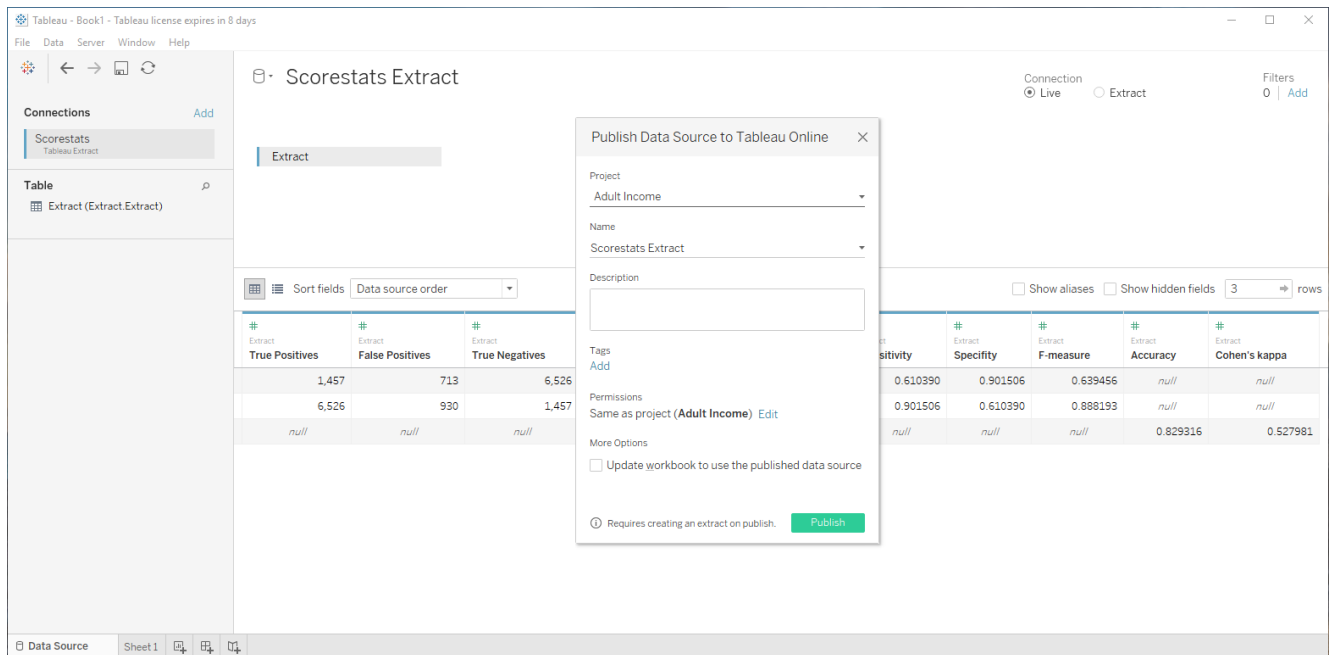
Now that our *Tableau Online* account is in place and KNIME Analytics Platform has been configured, use the *Tableau Writer* node to export a `.hyper` file. Double click the node assigned to write out model scoring statistics to open its settings. The only thing we need to do here is to give a path and file name for the file:



Now, we can execute the node, and a `.hyper` file is created. Files of this type can be imported into *Tableau Desktop* for further analysis, and from there, published to *Tableau Server*. `.hyper` files can also be published directly to a Tableau server by using Tableau's command line utility `tabcmd`. We will discuss each of these methods below.

Publishing `.hyper` files

`.hyper` files exported from KNIME Analytics Platform can be used directly with a installation of *Tableau Desktop*. Double clicking on the `.hyper` file will open the Tableau interface where you can begin construction of visualizations on the data right away. You can also publish the `.hyper` file for use in the Tableau Online environment via the desktop GUI. To do this, navigate to *Server* → *Publish Data Source*, assign a Project in the resulting dialog, and click *Publish*. This will make the data from the `.hyper` file available in the Tableau Online Environment.



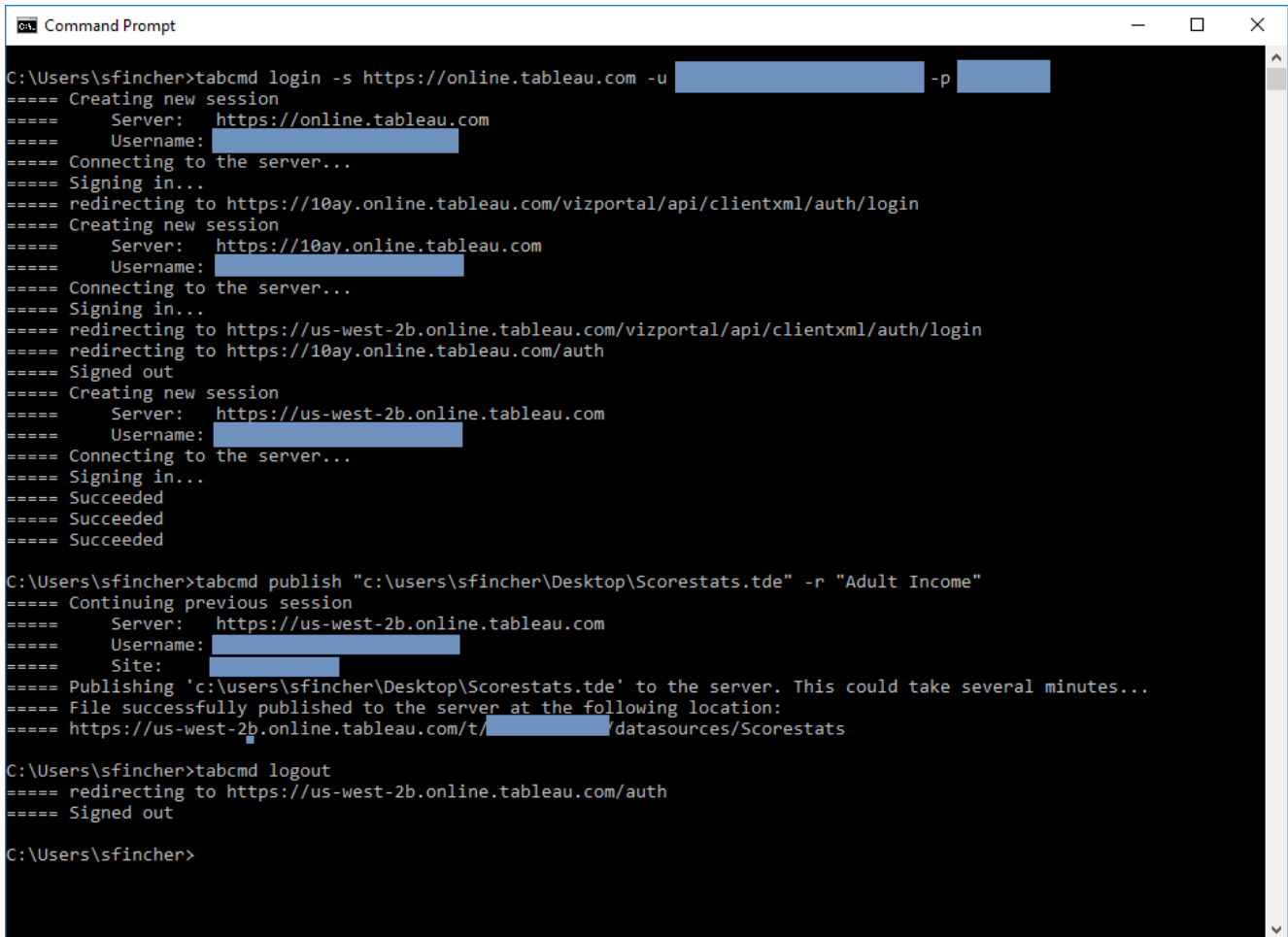
Publishing `.hyper` files can also be done without a GUI, using Tableau's command line utility `tabcmd`, which requires a separate installation, as detailed on the linked page). `tabcmd` allows for scripting of data management tasks in the server environment, and has a straightforward set of options and parameters. Logging into a Tableau server, for example, can be accomplished with the following command:

```
tabcmd login -s https://online.tableau.com -u YourUsername -p YourPassword
```

Publishing a `.hyper` file to the server can then be done as follows. Use our generated `.hyper` file as an example, making sure to include the full path and project name on the server:

```
tabcmd publish "c:\path\to\file\Scorestats.hyper" -r "Adult Income"
```

The figure below presents the results of using `tabcmd` to publish a `.hyper` file using these commands. The `tabcmd` documentation, linked above, presents a more comprehensive list of available commands and options.



```
C:\Users\sfincher>tabcmd login -s https://online.tableau.com -u [REDACTED] -p [REDACTED]
==== Creating new session
==== Server: https://online.tableau.com
==== Username: [REDACTED]
==== Connecting to the server...
==== Signing in...
==== redirecting to https://10ay.online.tableau.com/vizportal/api/clientxml/auth/login
==== Creating new session
==== Server: https://10ay.online.tableau.com
==== Username: [REDACTED]
==== Connecting to the server...
==== Signing in...
==== redirecting to https://us-west-2b.online.tableau.com/vizportal/api/clientxml/auth/login
==== redirecting to https://10ay.online.tableau.com/auth
==== Signed out
==== Creating new session
==== Server: https://us-west-2b.online.tableau.com
==== Username: [REDACTED]
==== Connecting to the server...
==== Signing in...
==== Succeeded
==== Succeeded
==== Succeeded

C:\Users\sfincher>tabcmd publish "c:\users\sfincher\Desktop\Scorestats.tde" -r "Adult Income"
==== Continuing previous session
==== Server: https://us-west-2b.online.tableau.com
==== Username: [REDACTED]
==== Site: [REDACTED]
==== Publishing 'c:\users\sfincher\Desktop\Scorestats.tde' to the server. This could take several minutes...
==== File successfully published to the server at the following location:
==== https://us-west-2b.online.tableau.com/t/[REDACTED]/datasources/Scorestats

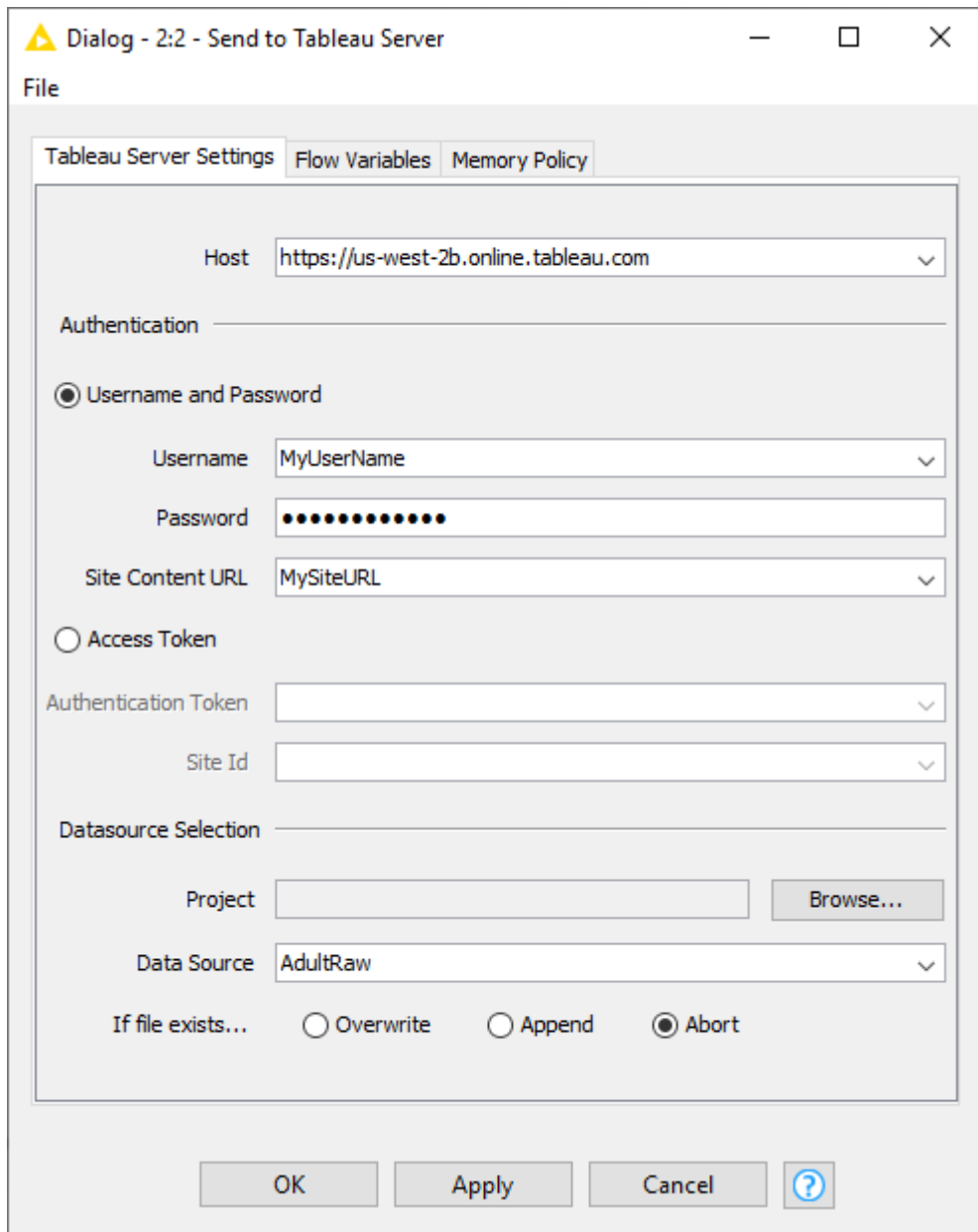
C:\Users\sfincher>tabcmd logout
==== redirecting to https://us-west-2b.online.tableau.com/auth
==== Signed out

C:\Users\sfincher>
```

Send to Tableau Server node

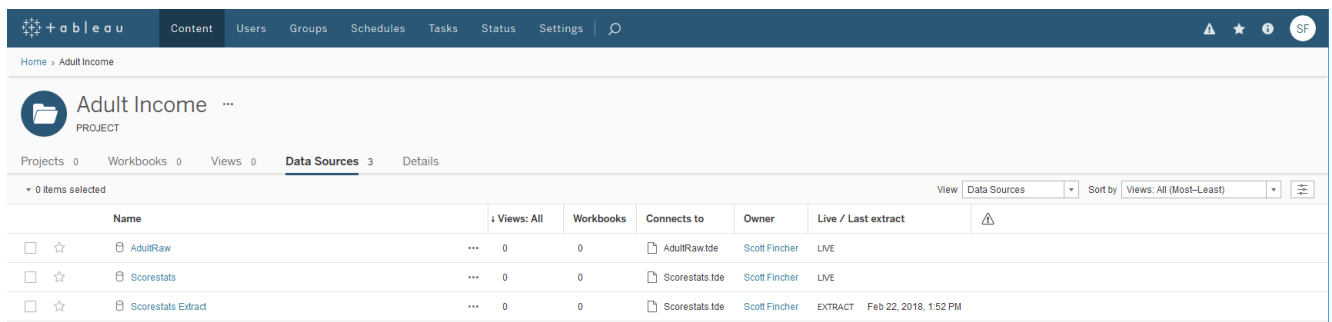
Perhaps you would like to skip the creation of `.hyper` files altogether, and instead send your data directly to Tableau Online from a KNIME workflow. This can be done using the *Send to Tableau Server* node. For this example, we send the raw Adult dataset to our *Tableau Online* server for additional visualization.

Double click the node to bring up the configuration dialog, and enter the required information under the *Tableau Server Settings* tab. Use the *Browse* button to have the node query the Tableau server for active projects. Here, we will be sending our file to the Adult Income project, and giving it a name of `AdultRaw`. Carefully note the format of the URL!



If we navigate to our project space in *Tableau Online*, we can now see three available data sources:

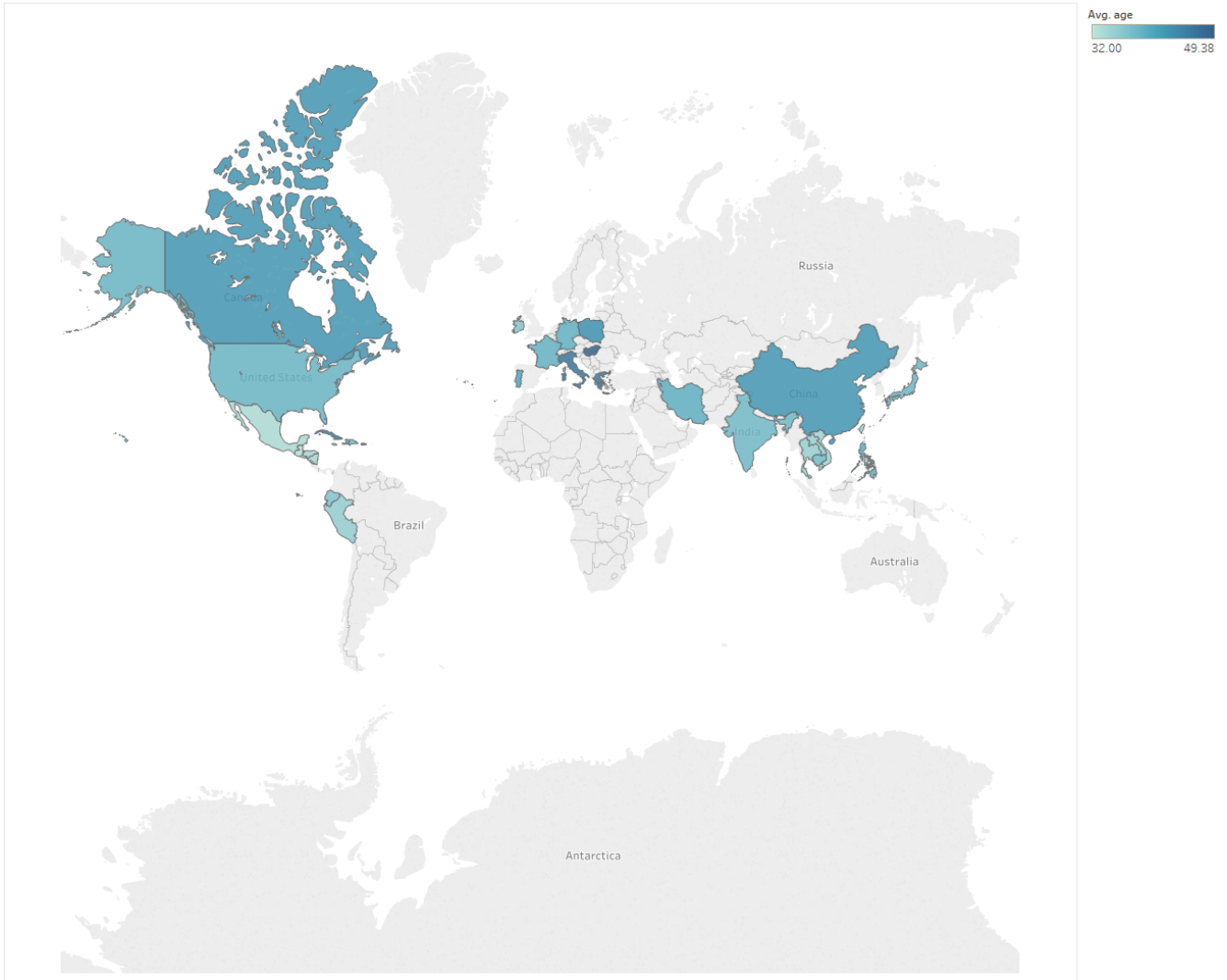
- Scorestats Extract, published via Tableau Desktop
- Scorestats, published via the command line using tabcmd
- AdultRaw, published directly from a KNIME workflow



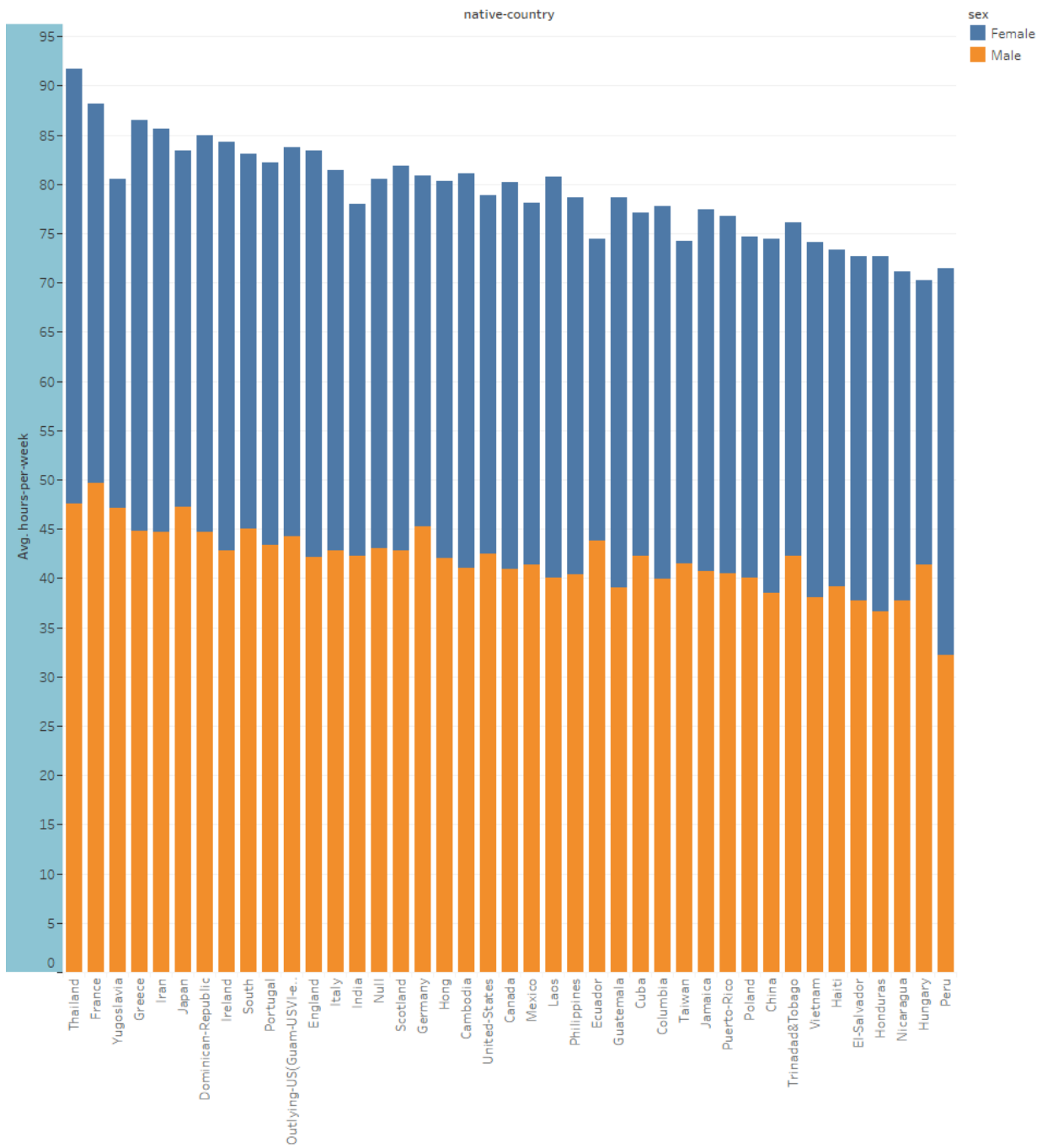
Creating a Visualization in Tableau Online

Once your data has been published to Tableau, you are free to create your visualizations in the usual way. Here are a couple of examples generated from the Adult dataset. The first presents a map of average ages for adults in the data set, by country of origin. The second is a stacked bar chart that shows, in descending order, the total hours adults worked, by gender, in each country.

Average Age by Country



Average Hours per Week by Gender for each Country

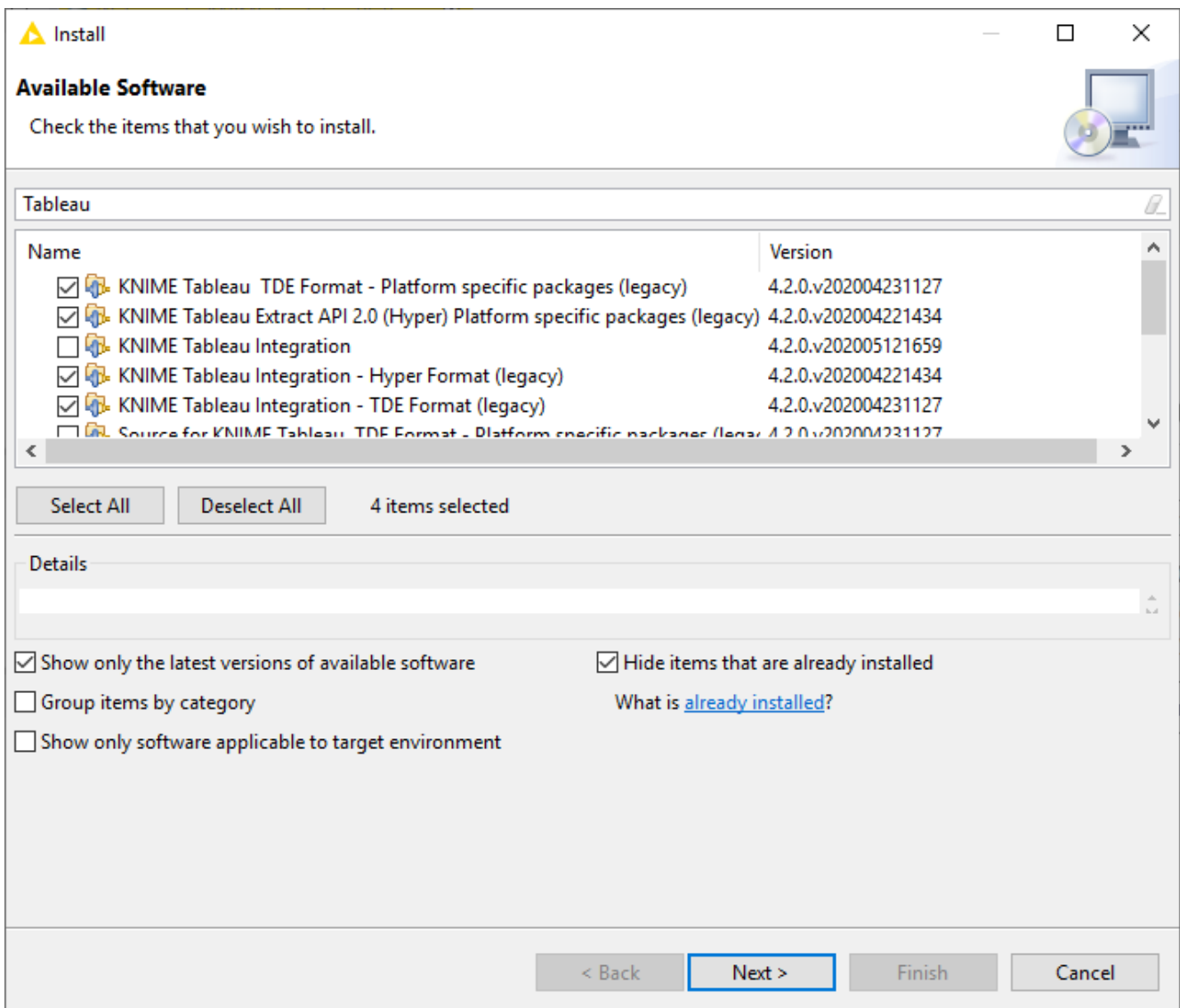


Legacy Extensions

To keep support for old versions of Tableau the legacy KNIME Tableau integrations are still available. This section describes how they can be installed.

Installing the Legacy Tableau Extensions

Navigate to *File* → *Install KNIME Extensions* and type "Tableau" in the search box that appears and **deselect the checkbox "Group items by category"**. When you do, you will see something like the screen below.



If you have Tableau 10.5 or later, you can use the .hyper format, which is created using the Tableau Data Extract API 2.0. Versions 10.4 and earlier use the older TDE format, which is created using the Tableau SDK. Select the extensions to install according to what you need. If you are not sure, you can install both, and tell KNIME which format you want to use later. The

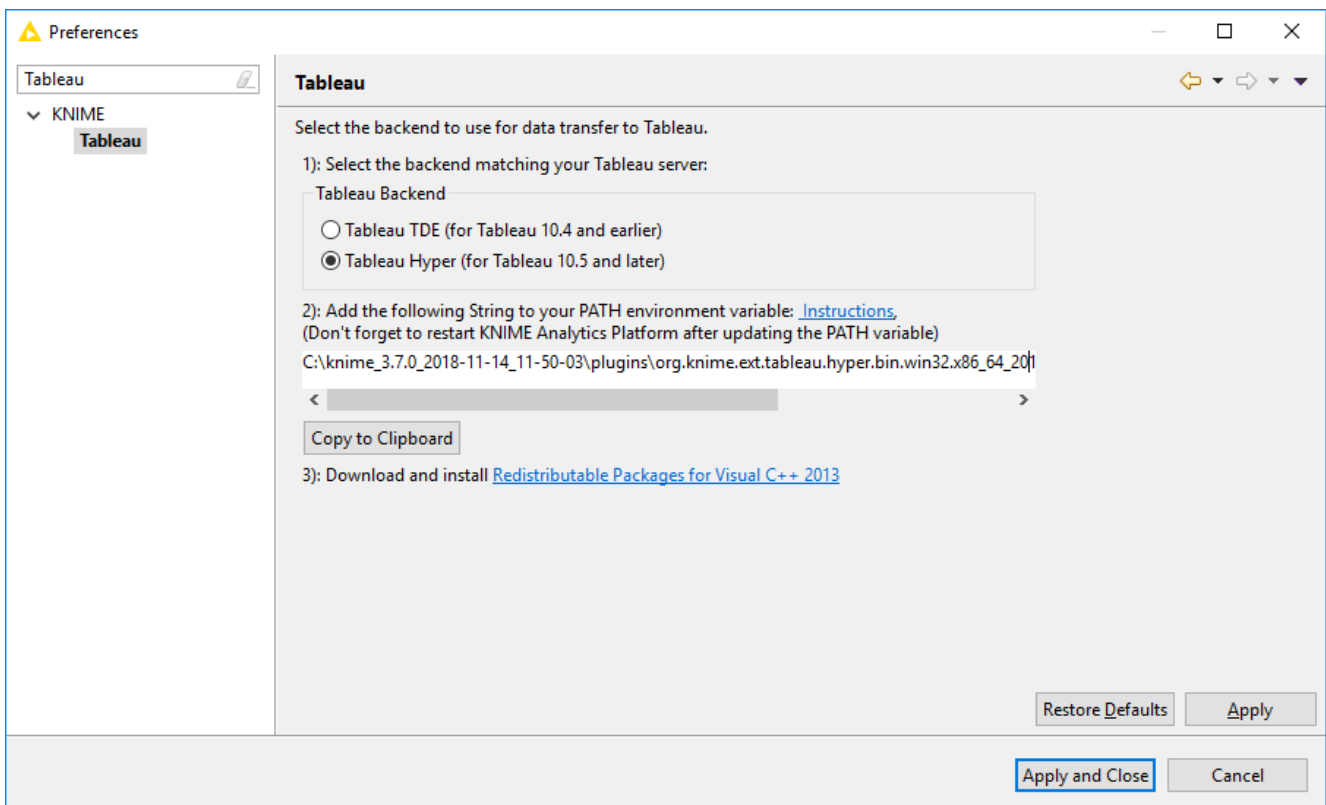
two extensions labeled **KNIME Tableau Integration** include the KNIME nodes, while the other extensions labeled **Platform Specific Packages** include the back-end support files - specifically, the Extract API or SDK files.

Once you have installed the extension(s), restart KNIME Analytics Platform and you should see the legacy Tableau nodes in the node repository under *KNIME Labs*. You can identify the legacy nodes by the suffix "(Hyper)" or "(TDE)". You can now drag and drop the Tableau nodes into your workflow, but you will need to perform some additional one-time setup on your system PATH before they will export data properly.

Installation Setup

Selecting Hyper or TDE

Go to *File* → *Preferences* → *KNIME* and find the Tableau page. Here, you can select whether to use the current .hyper format or the older TDE format. Changing this setting requires a restart of KNIME Analytics Platform.



Updating your System PATH (Windows)

You will need to add the string in the text box to your system's PATH. If you are not sure how

to do this, click on the blue *Instructions* link to open a page that describes the process in more detail. You can click the *Copy to Clipboard* button to assist in this process. Once you have updated your system's PATH to include either the Tableau Extract API 2.0 (for Hyper) and/or the Tableau SDK (for TDE), restart KNIME Analytics Platform.



Some Windows users may also need to install the Visual C++ 2013 redistributable, but many Windows 10 installations already include it. A link to the redistributable is provided if you do need it.

Installing the native library (Mac OS)

Use the buttons "Open source folder" and "Open target folder" to open the folder with the library files and the folder with the installation target, respectively. Copy the files from the source folder to the target folder to install the Tableau library on your system.

Troubleshooting

"Hyper Server did not call back on the callback port"

The error "Hyper Server did not call back on the callback port: process = -1" can appear randomly using a correctly configured setup with the "Tableau Extract API 2.0 (Hyper)".

This issue is related to the use of the "Tableau Extract API 2.0" and can be solved by using the new KNIME extension which makes use of the "Tableau Hyper API". Install the KNIME extension "KNIME Tableau Integration" as described in the [Installation](#) section and use the nodes "Send to Tableau Server" and "Tableau Writer".

This extension will be the default Tableau integration for the upcoming KNIME release.

KNIME AG
Talacker 50
8001 Zurich, Switzerland
www.knime.com
info@knime.com